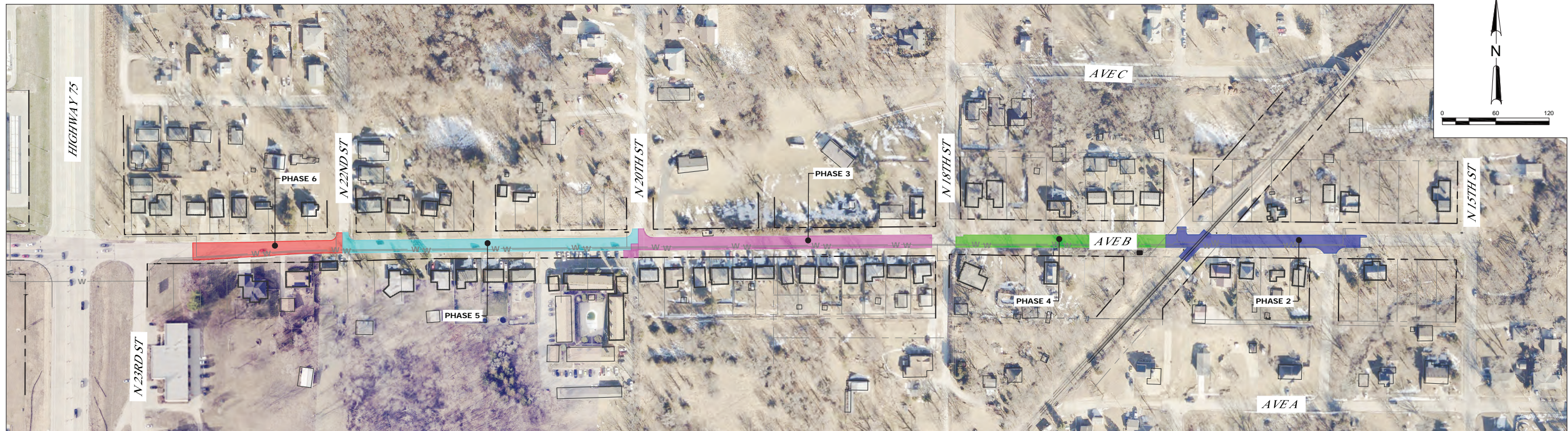




1
2 PHASE 1 OVERVIEW
Scale: 1:120



2
2 PHASE 2-6 OVERVIEW
Scale: 1:120

NO.	REVISIONS	DATE
1	ISSUED FOR BID	1-20-25
2	ISSUED FOR CONSTRUCTION	3-28-25

TRAFFIC AND PHASING PLAN -5
 PLATTSMOUTH WATER SUPPLY CONTRACT W3
 WATER TRANSMISSION MAIN
 PLATTSMOUTH, NE
 2025

JOB NO.
7266.004
 PROJECT MGR.
JOHN GADE



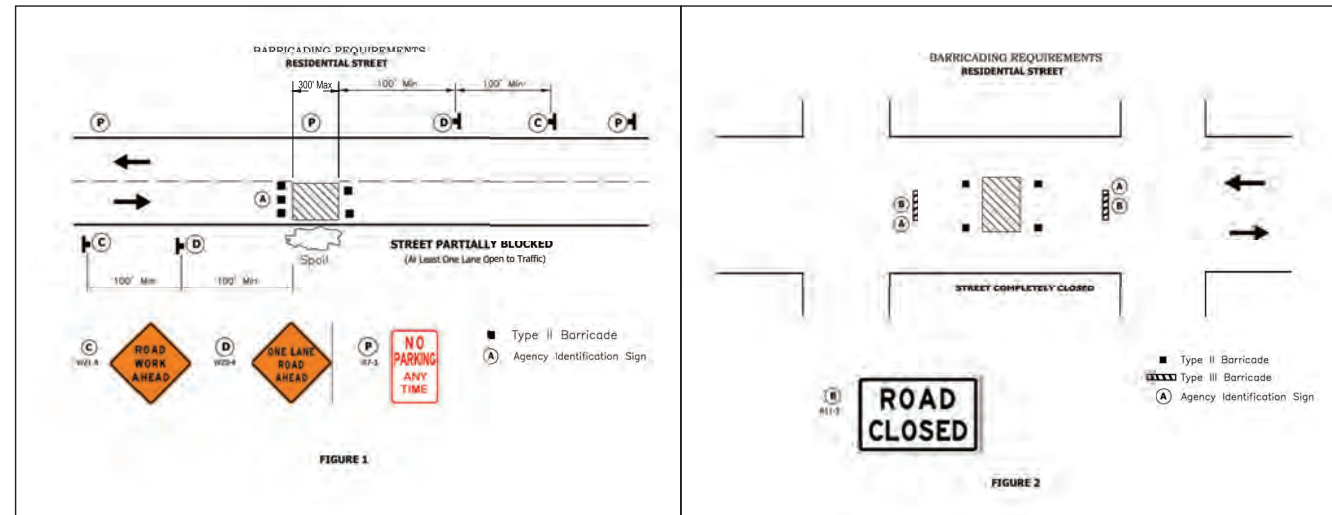
SHEET
122
C12.05



1 PHASE 2
Scale: 1:50

CONSTRUCTION AVENUE B PHASE 1 GENERAL TRAFFIC CONTROL NOTES:

1. THE INTERSECTIONS OF AVENUE B & 18TH AVENUE WILL BE PARTIALLY RESTRICTED DURING INSTALLATION OF THE WATER MAIN. CONTRACTOR SHALL UTILIZE TEMPORARY TRAFFIC SIGNALS TO MAINTAIN ONE-WAY ALTERNATING TRAFFIC AT ALL TIMES DURING ACTIVE CONSTRUCTION. TEMPORARY TRAFFIC CONTROL SHALL BE REMOVED AND REINSTALLED AS REQUIRED BY THE SEQUENCE OF CONSTRUCTION DETERMINED BY THE CONTRACTOR.
2. DURING CONSTRUCTION, CONTRACTOR SHALL PROVIDE SAFETY CLOSURES FOR THE ACTIVE CONSTRUCTION AREAS PER THE CITY OF OMAHA BARRICADING STANDARDS AND THE MANUAL ON UNIFORM TRAFFIC CONTROL DEVICES.
3. SEE SHEET C12.01 FOR GENERAL TTC NOTES.



- PROPERTY WITH VERY LIMITED ACCESS. CONTRACTOR MUST PROVIDE ACCESS DURING CONSTRUCTION ACTIVITIES.
- PROPERTY WITH LIMITED ACCESS. CONTRACTOR MUST PROVIDE ACCESS DURING CONSTRUCTION ACTIVITIES.
- PROPERTY WITH LIMITED ACCESS. CONTRACTOR MUST PROVIDE ACCESS DURING CONSTRUCTION ACTIVITIES.
- TEMPORARY ON-STREET PARKING.

NO.	REVISIONS	DATE:
1	ISSUED FOR BID	1-20-25
2	ISSUED FOR CONSTRUCTION	3-28-25

TRAFFIC AND PHASING PLAN -6
PLATTSMOUTH WATER SUPPLY CONTRACT W3
WATER TRANSMISSION MAIN
PLATTSMOUTH, NE
2025

JOB NO.
7266.004
PROJECT MGR.
JOHN GADE



SHEET
123
C12.06



- PROPERTY WITH VERY LIMITED ACCESS. CONTRACTOR MUST PROVIDE ACCESS DURING CONSTRUCTION ACTIVITIES.
- PROPERTY WITH LIMITED ACCESS. CONTRACTOR MUST PROVIDE ACCESS DURING CONSTRUCTION ACTIVITIES.
- PROPERTY WITH LIMITED ACCESS. CONTRACTOR MUST PROVIDE ACCESS DURING CONSTRUCTION ACTIVITIES.
- TEMPORARY ON-STREET PARKING.
- 1 **PHASE 4**
Scale: 1:50



- 1 **PHASE 3**
Scale: 1:50

NO.	ISSUED FOR BID	ISSUED FOR CONSTRUCTION
1		
2		

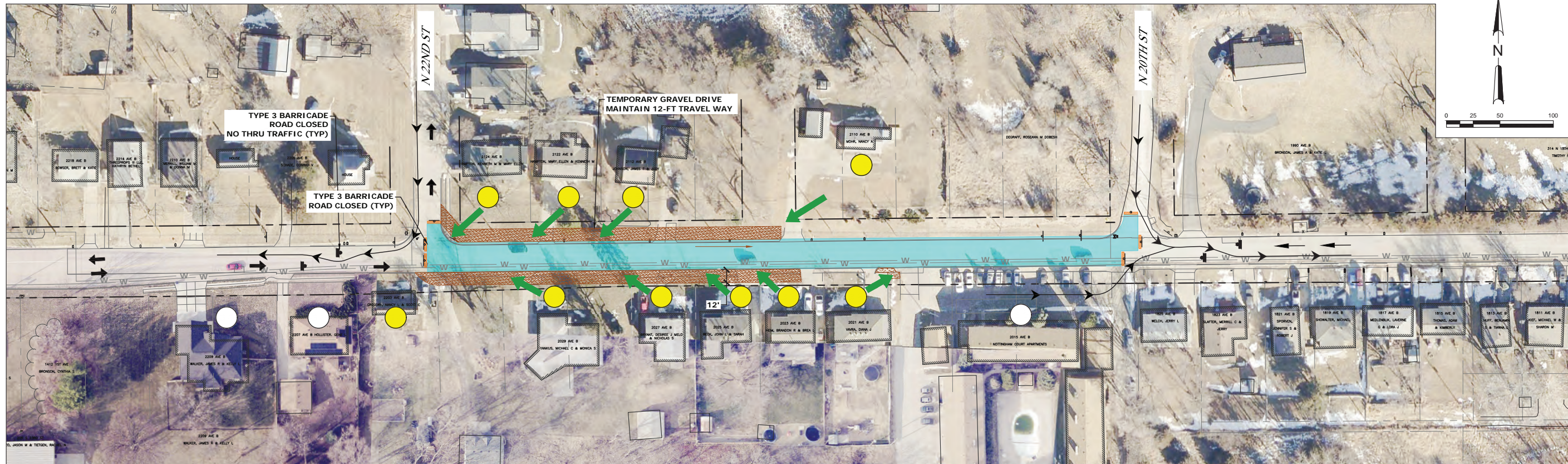
DATE:
1-20-25
3-28-25

TRAFFIC AND PHASING PLAN - 7
 PLATTSMOUTH WATER SUPPLY CONTRACT W3
 WATER TRANSMISSION MAIN
 PLATTSMOUTH, NE
 2025

JOB NO.
7266.004
 PROJECT MGR.
JOHN GADE

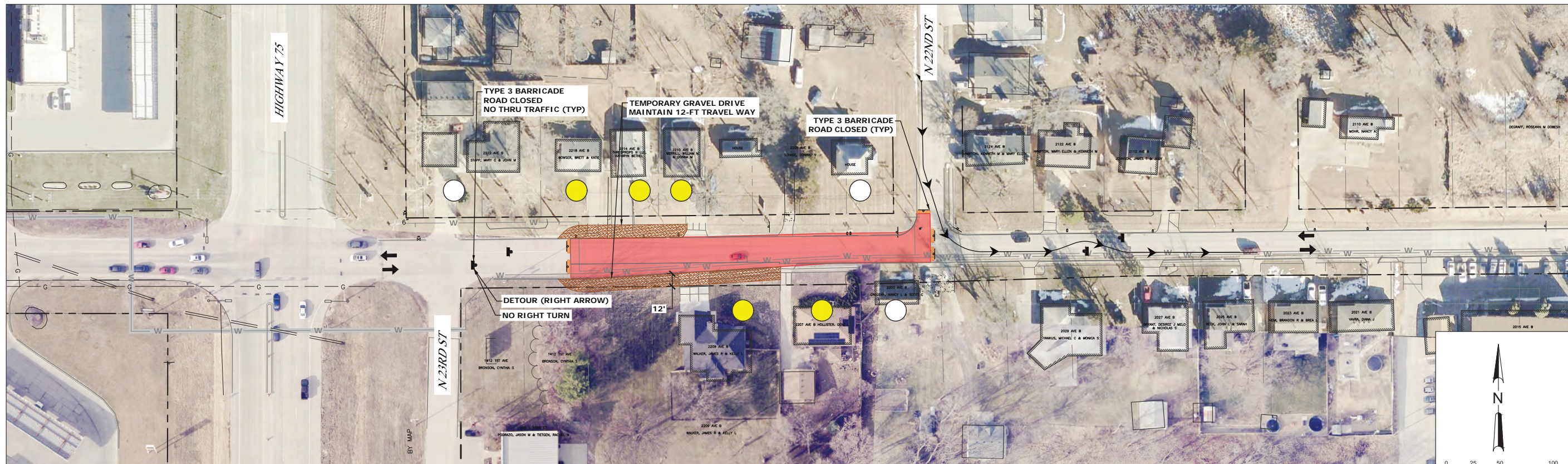


SHEET
124
C12.07



- PROPERTY WITH VERY LIMITED ACCESS. CONTRACTOR MUST PROVIDE ACCESS DURING CONSTRUCTION ACTIVITIES.
- PROPERTY WITH LIMITED ACCESS. CONTRACTOR MUST PROVIDE ACCESS DURING CONSTRUCTION ACTIVITIES.
- PROPERTY WITH LIMITED ACCESS. CONTRACTOR MUST PROVIDE ACCESS DURING CONSTRUCTION ACTIVITIES.

1 PHASE 5
Scale: 1:50



1 PHASE 6
Scale: 1:50

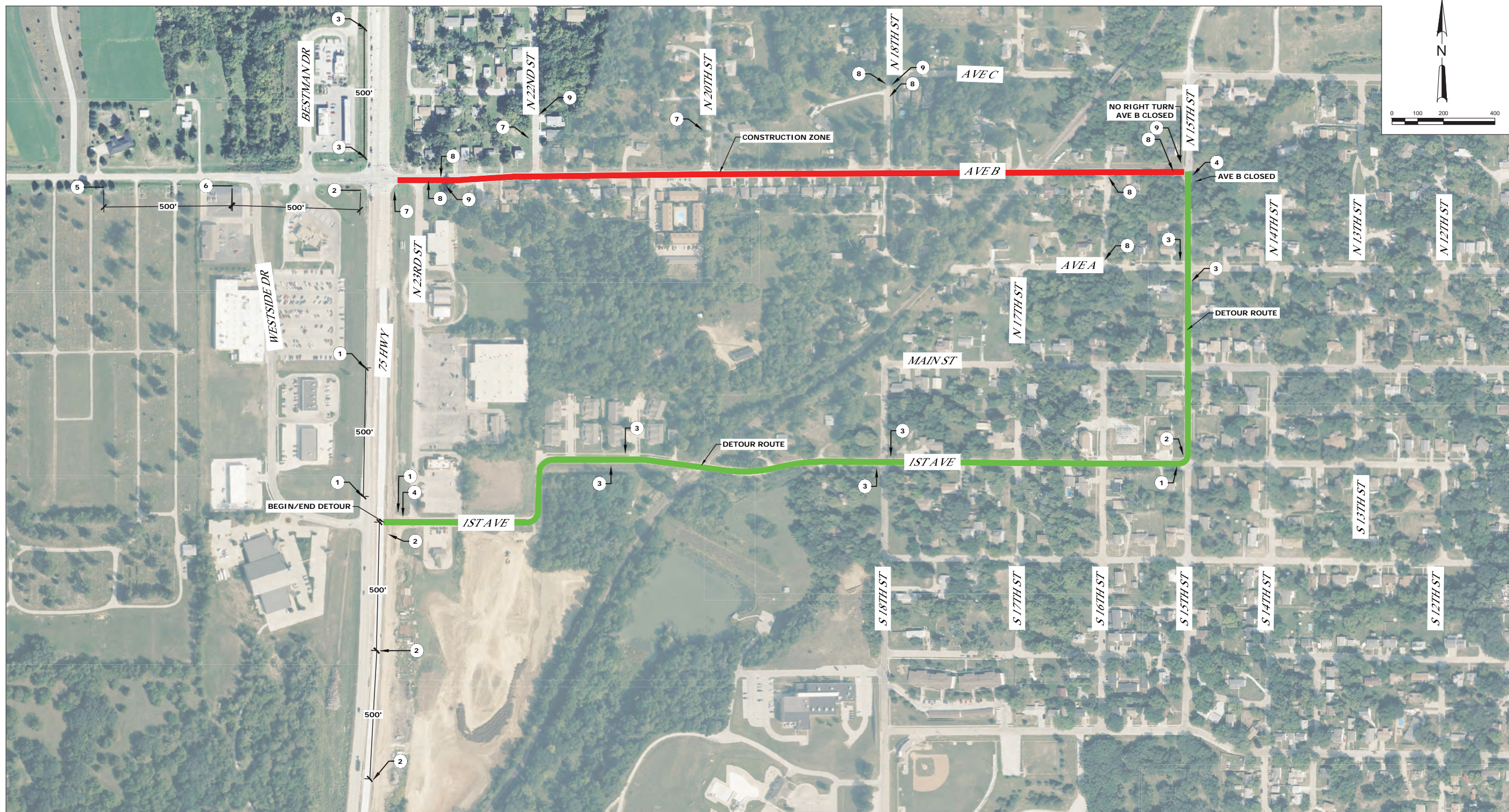
NO.	REVISIONS	DATE
1	ISSUED FOR BID	1-20-25
2	ISSUED FOR CONSTRUCTION	3-28-25

TRAFFIC AND PHASING PLAN - 8
 PLATTSMOUTH WATER SUPPLY CONTRACT W3
 WATER TRANSMISSION MAIN
 PLATTSMOUTH, NE
 2025

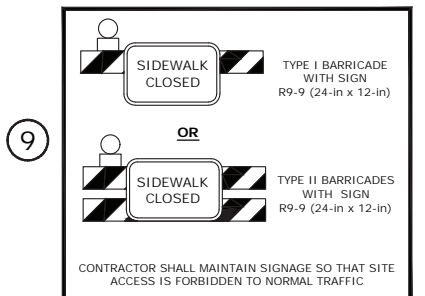
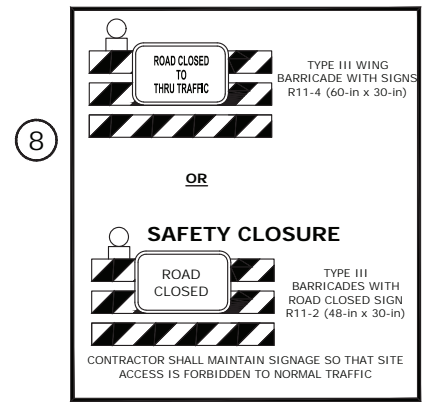
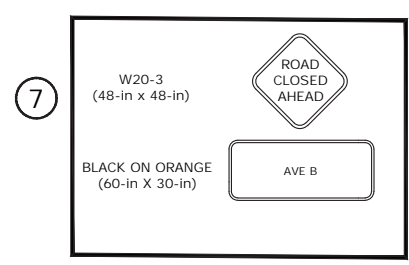
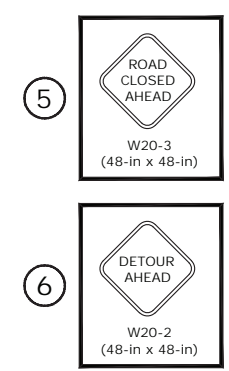
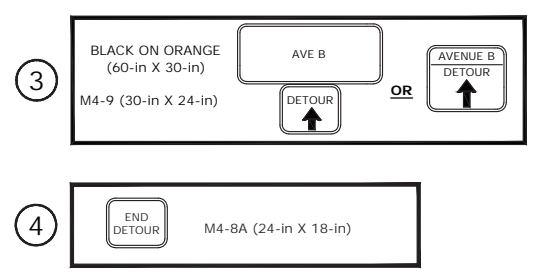
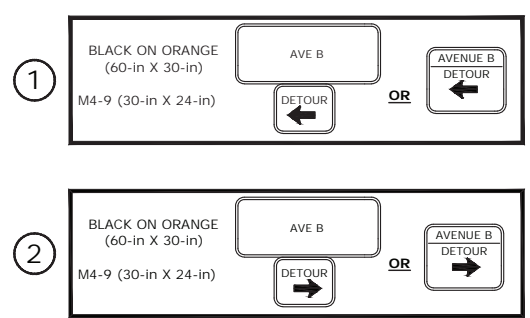
JOB NO.
7266.004
 PROJECT MGR.
JOHN GADE



SHEET
125
C12.08



SIGN LEGEND



NO.	REVISIONS	DATE
1	ISSUED FOR BID	1-20-25
2	ISSUED FOR CONSTRUCTION	3-28-25

TRAFFIC AND PHASING PLAN -9
 PLATTSMOUTH WATER SUPPLY CONTRACT W3
 WATER TRANSMISSION MAIN
 PLATTSMOUTH, NE
 2025

JOB NO.
7266.004
 PROJECT MGR.
JOHN GADE



SHEET
126
C12.09