



Facade Survey, Plattsmouth, Nebraska

2008 Survey Sheet: Plattsmouth, Nebraska – Main Street Historic District

Survey of Existing Conditions: Buildings (Exterior)		Survey I.D. Number:	21 & 22
Name of Structure:	Dentists – Moseman & Labart	Address:	617 & 619 Main Street



Number of Stories	1	Historic Name	
Overall Shape	Rectangular; double-wide	NE Hist Bldg Survey No.	CC14-14
Primary Wall Material(s)	masonry	Historic Use	doctor office
Other Material(s)		Year(s) Built	c. 1892-99
Roof type	flat	Current Use(s)	dentist office
Windows/Doors		Style(s)	commercial Italianate
		Architect/Builder	unknown
Alteration(s)			
Stylistic Feature(s)	pressed-metal hoods, cornices		
Interesting Feature(s)			
Notes & Comments	619 appears in better condition than 617		

Review for Compliance with City of Plattsmouth Design Guidelines for Historic Preservation 2008:

Work to	pressed-metal hoods and cornices
Retain/Preserve	
Conforming Work	
Work to	finials (see historic photos)
Restore/Reconstruct	
Non-Conforming Work	
Notes & Comments	

617 & 619 Main Street

Preserve pressed—
metal hoods

Preserve pressed—
metal cornice



Restore metal finials



2008 Survey Sheet: Plattsmouth, Nebraska – Main Street Historic District

Survey of Existing Conditions: Buildings (Exterior)

Survey I.D. Number:

23

Name of Structure: Mr. Chet's Barber Shop/Talons
Nail Salon

Address:

615 Main Street



Number of Stories	2	Historic Name	part of Union Block
Overall Shape	rectangular	NE Hist Bldg Survey No.	CC14-13
Primary Wall Material(s)	masonry	Historic Use	bank, harness shop, drugstore (various locations in this Block)
Other Material(s)	concrete or stone beltline and window sills; cast iron columns	Year(s) Built	c. 1881
Roof type	flat	Current Use(s)	barber shop/nail salon
Windows/Doors	windows partially filled in on second floor; windows replaced	Style(s)	commercial Italianate
		Architect/Builder	unknown
Alteration(s)	modified entrances; replaced partial front lower facades; windows replaced		
Stylistic Feature(s)	original metal cornice, cast metal storefront system		
Interesting Feature(s)			
Notes & Comments			

Review for Compliance with City of Plattsmouth Design Guidelines for Historic Preservation 2008:

Work to Retain/Preserve	cast iron columns; pressed-metal cornice; hoods and belt course
Conforming Work	
Work to Restore/Reconstruct	cornice needs some repair; color palette could be improved
Non-Conforming Work	infill windows on upper floor (size and style); infill of entry door assembly; signage (style)
Notes & Comments	

615 Main Street

Preserve upper and lower pressed-metal cornices

Leave brick unpainted

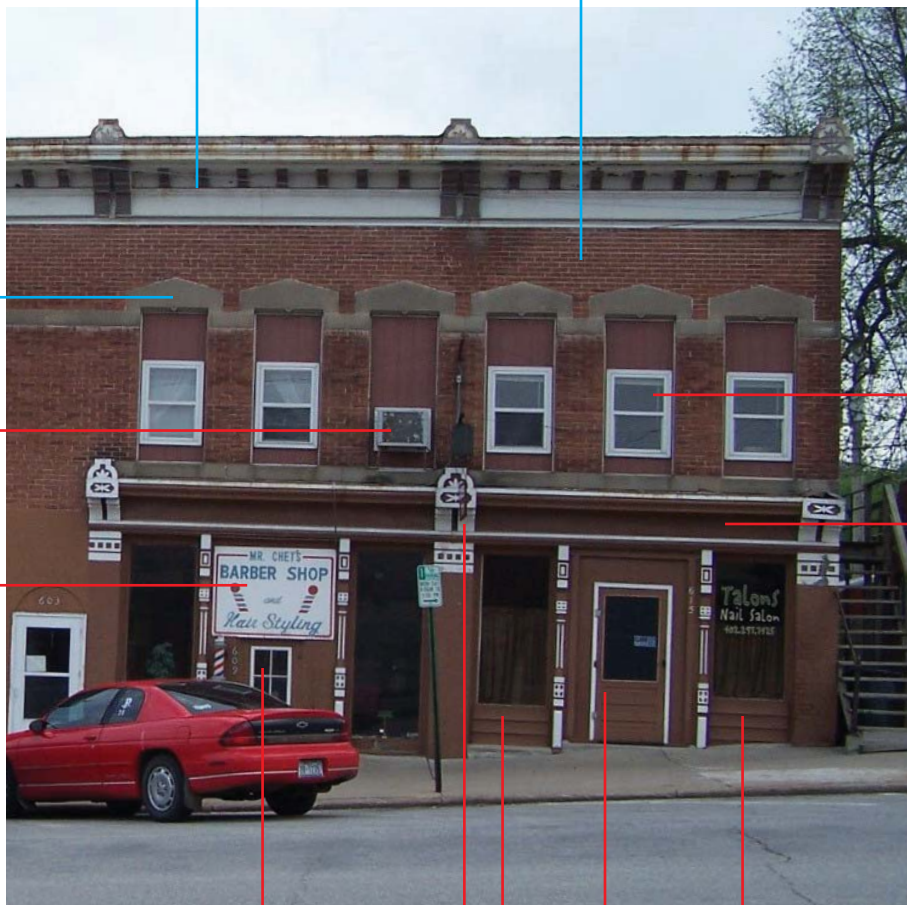
Preserve stone hoods and belt course

Remove air conditioning unit from view

Select more appropriate signage

Install windows of correct size, style and material

Installation of proper awning would be appropriate



Restore original entry

Restore original entry

Install new door assembly of proper style and material

Select more appropriate color palette

Restore lower window panel

2008 Survey Sheet: Plattsmouth, Nebraska – Main Street Historic District

Survey of Existing Conditions: Buildings (Exterior)		Survey I.D. Number:	24
Name of Structure:	American Family Insurance	Address:	601 Main Street



Number of Stories	2	Historic Name	part of Union Block
Overall Shape	rectangular	NE Hist Bldg Survey No.	CC14-13
Primary Wall Material(s)	masonry	Historic Use	Citizen's Bank; harness shop in basement
Other Material(s)	concrete or stone beltline and window sills	Year(s) Built	c. 1881
Roof type	flat	Current Use(s)	insurance office
Windows/Doors	windows partially filled in on second; replaced on first floor	Style(s)	commercial Italianate
		Architect/Builder	unknown
Alteration(s)	modified entrances; replaced partial front lower facade; replaced transom, windows		
Stylistic Feature(s)	original metal cornice; pedimented pressed-metal crown flanked by finials above corner entry, cast metal storefront system		
Interesting Feature(s)	corner entry, 'BANK' spelled out in cornice		
Notes & Comments			

Review for Compliance with City of Plattsmouth Design Guidelines for Historic Preservation 2008:

Work to Retain/Preserve	pressed-metal cornice; crown and finials; cast iron elements at lower façade; hoods and belt course
Conforming Work	
Work to Restore/Reconstruct	color palette could be improved; decorative pieces at lower windows (see historic photos); installation of proper awning on east facade
Non-Conforming Work	inappropriate infill windows (size and material); awning is inappropriate because window size is incorrect; entry door assembly; signage (material); replacement of lower façade is unacceptable
Notes & Comments	

601 Main Street



Preserve pressed-metal cornice, pediment and finials

Leave brick unpainted

Preserve stone hoods and belt course

Install windows of correct size, style and material (north facade also)

Installation of proper awning would be appropriate

Restore original sized windows and transoms (see Fig. 1.0 in Appendix)

Select more appropriate signage

Install new door of proper style and material

Select more appropriate color palette

Remove parge coat and restore lower facade with historically accurate material

2008 Survey Sheet: Plattsmouth, Nebraska – Main Street Historic District

Survey of Existing Conditions: Buildings (Exterior)		Survey I.D. Number:	25
Name of Structure:	Le Soleil Tanning	Address:	106 S. 6 th Street



Number of Stories	2	Historic Name	part of Union Block
Overall Shape	rectangular	NE Hist Bldg Survey No.	CC14-13
Primary Wall Material(s)	masonry	Historic Use	drugstore
Other Material(s)	concrete or stone beltline, window sills, cast iron columns	Year(s) Built	c. 1881
Roof type	flat	Current Use(s)	tanning salon
Windows/Doors	replaced windows; partially filled in	Style(s)	commercial Italianate
		Architect/Builder	unknown
Alteration(s)	modified entrances; replaced partial front lower facades		
Stylistic Feature(s)	original metal cornice, cast metal storefront system		
Interesting Feature(s)			
Notes & Comments	stone is eroding		

Review for Compliance with City of Plattsmouth Design Guidelines for Historic Preservation 2008:

Work to Retain/Preserve	pressed-metal cornice; cast iron elements at lower facades
Conforming Work	
Work to Restore/Reconstruct	cornice needs some repair; installation of a proper awning would be appropriate
Non-Conforming Work	wood shake awning, inappropriate infill windows (size and material) and door assembly; visible air conditioning unit
Notes & Comments	

106 S. 6th Street

Preserve pressed-metal cornice

Leave brick unpainted

Preserve stone hoods and belt course

Remove air conditioning unit from view

Preserve cast iron elements

Restore transom windows

Install windows of correct size, style and material

Remove existing awning; installation of proper awning would be appropriate

Select more appropriate signage

Install new door of proper style and material

Select more appropriate color palette



2008 Survey Sheet: Plattsmouth, Nebraska – Main Street Historic District

Survey of Existing Conditions: Buildings (Exterior)		Survey I.D. Number:	26/27
Name of Structure:	Life Arts/Howard Chiropractic/ Union Block Apartments	Address:	112/114 S.6 th Street



Number of Stories	2	Historic Name	part of Union Block
Overall Shape	rectangular; four bay	NE Hist Bldg Survey No.	CC14-13
Primary Wall Material(s)	masonry	Historic Use	bank, harness shop, drugstore (various locations in this Block)
Other Material(s)	concrete or stone beltline, window sills	Year(s) Built	c. 1881
Roof type	flat	Current Use(s)	chiropractic office/apartments
Windows/Doors	original wood windows – upper story	Style(s)	commercial Italianate
		Architect/Builder	unknown
Alteration(s)	modified entrances; replaced partial front lower facades; replaced transom, windows (#24)		
Stylistic Feature(s)	original metal cornice, cast metal storefront system		
Interesting Feature(s)	'UNION BLOCK' spelled out in cornice		
Notes & Comments			

Review for Compliance with City of Plattsmouth Design Guidelines for Historic Preservation 2008:

Work to Retain/Preserve	pressed-metal cornice, pediment and finials; cast iron elements; hoods and belt course
Conforming Work	
Work to Restore/Reconstruct	installation of a proper awning would be appropriate
Non-Conforming Work	inappropriate infill windows at lower facade (size and material); inappropriate door assembly (style and material); visible air conditioning unit; color palette
Notes & Comments	

112 & 114 S. 64th Street

Preserve pressed—metal
cornice, pediment and
finials

Leave brick unpainted

Preserve stone hoods and
belt course

Preserve cast iron elements

Restore transom
windows

Remove air condition—
ing unit from view

Installation of proper
awning would be
appropriate

Install windows of
proper style and
material

Reconstruct lower window panel

Install new door assembly of proper style and material

Select more appropriate color palette



2008 Survey Sheet: Plattsmouth, Nebraska – Main Street Historic District

Survey of Existing Conditions: Buildings (Exterior)		Survey I.D. Number:	28
Name of Structure:	Nebraska _ Association	Address:	116 S.6 th Street



Number of Stories	2	Historic Name	part of Union Block
Overall Shape	rectangular	NE Hist Bldg Survey No.	CC14-13
Primary Wall Material(s)	masonry	Historic Use	bank, harness shop, drugstore (various locations in this Block)
Other Material(s)	concrete or stone beltline, window sills	Year(s) Built	c. 1881
Roof type	flat	Current Use(s)	martial arts facility
Windows/Doors	original wood windows – upper story	Style(s)	commercial Italianate
		Architect/Builder	unknown
Alteration(s)	modified entrances; replaced partial front lower facades		
Stylistic Feature(s)	original metal cornice, cast metal storefront system		
Interesting Feature(s)			
Notes & Comments			

Review for Compliance with City of Plattsmouth Design Guidelines for Historic Preservation 2008:

Work to Retain/Preserve	pressed-metal cornice, pediment and finials; cast iron elements; hoods and belt course
Conforming Work	
Work to Restore/Reconstruct	installation of a proper awning would be appropriate
Non-Conforming Work	inappropriate door assembly (style and material); visible air conditioning unit
Notes & Comments	

114 S. 6th Street



2008 Survey Sheet: Plattsmouth, Nebraska – Main Street Historic District

Survey of Existing Conditions: Buildings (Exterior)		Survey I.D. Number:	29
Name of Structure:	Mr. Z's	Address:	122 S. 6 th Street



Number of Stories	1 1/2	Historic Name	First Methodist Church
Overall Shape	rectangular	NE Hist Bldg Survey No.	CC14-129
Primary Wall Material(s)	wood frame	Historic Use	church, commercial
Other Material(s)		Year(s) Built	1869
Roof type	gable	Current Use(s)	movie rental
Windows/Doors		Style(s)	
		Architect/Builder	unknown
Alteration(s)	steeple removed, sided, storefront added		
Stylistic Feature(s)			
Interesting Feature(s)			
Notes & Comments	believed to have been framed in Chicago and shipped to Plattsmouth by rail		

Review for Compliance with City of Plattsmouth Design Guidelines for Historic Preservation 2008:

Work to Retain/Preserve
Conforming Work
Work to Restore/Reconstruct
Non-Conforming Work
Notes & Comments



Major alterations have occurred at the original First Methodist Church. It was later altered to fit the needs of a retail store. If it is the preference of the owner to remain a retail facility, the rules outlined in the "Plattsmouth Downtown Historic Guidelines" should be followed.

2008 Survey Sheet: Plattsmouth, Nebraska – Main Street Historic District

Survey of Existing Conditions: Buildings (Exterior)

Survey I.D. Number: 30

Name of Structure: Eastern Platte Valley
Mediation Services

Address: 545 Main Street



Number of Stories	2	Historic Name	Boeck Building
Overall Shape	rectangular	NE Hist Bldg Survey No.	CC14-119
Primary Wall Material(s)	masonry	Historic Use	furniture factory/store
Other Material(s)	west façade stuccoed, metal	Year(s) Built	1886
Roof type	flat	Current Use(s)	
Windows/Doors		Style(s)	commercial Italianate
		Architect/Builder	unknown

Alteration(s)	entry modernized, windows replaced, manufactured stone veneer at base
Stylistic Feature(s)	pressed metal cornice, pedimented crown with '1886' and 'H. BOECK'
Interesting Feature(s)	corner entrance, corner pilasters
Notes & Comments	original owner was also an undertaker; building had one of the first elevators in town; an explosion/fire in 1907 killed one man and injured another

Review for Compliance with City of Plattsmouth Design Guidelines for Historic Preservation 2008:

Work to	cornice and pediment
Retain/Preserve	
Conforming Work	signage on glass; color palette; display window location and size
Work to	cornice at lintel
Restore/Reconstruct	
Non-Conforming Work	use of materials (reflective glass, manufactured stone)
Notes & Comments	

545 Main Street

Avoid using reflective glass

Restore cornice at lintel area

Preserve pressed-metal cornice and pediment

Appropriate windows of correct size and style should be used (see historic photo)

Reconstruct balcony (see historic photo)

Leave brick unpainted

Avoid using materials manufactured stone

Retain appropriate signage



2008 Survey Sheet: Plattsmouth, Nebraska – Main Street Historic District

Survey of Existing Conditions: Buildings (Exterior)		Survey I.D. Number:	31
Name of Structure:	Bell Abstract and Title Inc.	Address:	543 Main Street



Number of Stories	2	Historic Name	White Building
Overall Shape	rectangular, three bay	NE Hist Bldg Survey No.	CC14-118
Primary Wall Material(s)	masonry	Historic Use	dry goods/grocery store
Other Material(s)	black glass on storefront	Year(s) Built	c. 1870 or 1880
Roof type	flat	Current Use(s)	office
Windows/Doors	original windows	Style(s)	
		Architect/Builder	commercial Italianate
Alteration(s)	modernized store front (pigmented structural glass)		
Stylistic Feature(s)	bracketed pressed-metal wall cornice above storefront, above windows; at top		
Interesting Feature(s)	'WHITE' in relief in cornice, below pressed –metal pedimented crown		
Notes & Comments			

Review for Compliance with City of Plattsmouth Design Guidelines for Historic Preservation 2008:

Work to	pressed-metal cornice, pilaster capitals and pediment
Retain/Preserve	
Conforming Work	entry and windows (size and style)
Work to	
Restore/Reconstruct	
Non-Conforming	
Work	
Notes & Comments	

2008 Survey Sheet: Plattsmouth, Nebraska – Main Street Historic District

Survey of Existing Conditions: Buildings (Exterior)

Survey I.D. Number: 32

Name of Structure:

Address:

537 & 527 Main Street



Number of Stories	2	Historic Name	Dovey Building
Overall Shape	rectangular, three bays	NE Hist Bldg Survey No.	CC14-12
Primary Wall Material(s)	masonry, metal storefront	Historic Use	dry goods/grocery store; pork packing plant in back
Other Material(s)	black glass on storefront	Year(s) Built	1886
Roof type	flat	Current Use(s)	
Windows/Doors	original windows	Style(s)	commercial Italianate
		Architect/Builder	E.G. Dovey
Alteration(s)	modernized storefront (pigmented structural glass)		
Stylistic Feature(s)	original bracketed metal cornice above storefront, second story windows and at top, topped by central pressed-metal pedimented crown		
Interesting Feature(s)	'18 DOVEY 86' in relief in bracketed pressed-metal cornice		
Notes & Comments			
Review for Compliance with City of Plattsmouth Design Guidelines for Historic Preservation 2008:			
Work to Retain/Preserve	pressed-metal cornice, pilaster capitals and pediment		
Conforming Work	signage on glass		
Work to Restore/Reconstruct			
Non-Conforming Work	neon signage; infill of transom windows; removal of entry at business to the left;		
Notes & Comments	window frames in need of painting		

527-543 Main Street



Preserve pressed-metal cornice, pediments and other decorative elements

Leave brick unpainted

Restore original entry

Restore transoms above all entries and windows

Avoid using neon signage

Select more appropriate color palette

Remove exterior material and replace with more historically accurate material

2008 Survey Sheet: Plattsmouth, Nebraska – Main Street Historic District

Survey of Existing Conditions: Buildings (Exterior)

Survey I.D. Number: 33

Name of Structure:

Address:

525 Main Street



Number of Stories	2	Historic Name	Pepperberg Cigar Factory
Overall Shape	rectangular	NE Hist Bldg Survey No.	CC14-117
Primary Wall Material(s)	masonry	Historic Use	cigar factory
Other Material(s)		Year(s) Built	1886
Roof type	flat	Current Use(s)	bar
Windows/Doors	windows replaced	Style(s)	
		Architect/Builder	
Alteration(s)	storefront replaced		
Stylistic Feature(s)	original cornice		
Interesting Feature(s)	'18 PEPPERBERG 86' in relief in cornice		
Notes & Comments			

Review for Compliance with City of Plattsmouth Design Guidelines for Historic Preservation 2008:

Work to	pressed metal cornice, pediment, finial and pilaster capitals
Retain/Preserve	
Conforming Work	
Work to	cornice at lintel; finial at upper left
Restore/Reconstruct	
Non-Conforming Work	inappropriate infill of lower façade (materials, window sizes); signage (material); inappropriately infill windows on upper floor (size and material); inappropriate infill of lintel area
Notes & Comments	

525 Main Street



Install windows of correct size, style and material

Select more appropriate signage

Restore transom windows

Restore transom windows

Remove ventilation unit from view

Install new door of proper style and material

Remove wood siding and install windows of correct size, style and material

2008 Survey Sheet: Plattsmouth, Nebraska – Main Street Historic District

Survey of Existing Conditions: Buildings (Exterior)		Survey I.D. Number:	34
Name of Structure:	Main Street Gallery and Studio	Address:	521 Main Street



Number of Stories	2	Historic Name	
Overall Shape	rectangular	NE Hist Bldg Survey No.	n/a
Primary Wall Material(s)	stucco on second floor	Historic Use	
Other Material(s)		Year(s) Built	
Roof type	flat	Current Use(s)	art gallery
Windows/Doors	insulated glazing units	Style(s)	
		Architect/Builder	unknown
Alteration(s)	second floor replaced?		
Stylistic Feature(s)			
Interesting Feature(s)			
Notes & Comments	original store front		

Review for Compliance with City of Plattsmouth Design Guidelines for Historic Preservation 2008:

Work to	cast iron store front
Retain/Preserve	
Conforming Work	
Work to	metal cornice
Restore/Reconstruct	
Non-Conforming Work	inappropriate alteration of upper story
Notes & Comments	

521 Main Street

Reconstruct pressed-metal cornice

Install windows of correct size, style and material

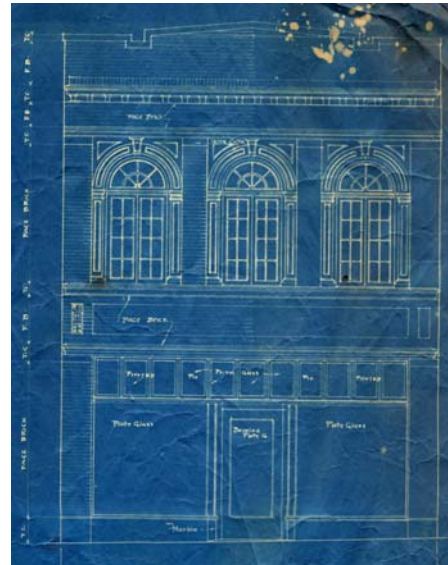
Remove air conditioning unit from view

Lower facade in compliance with guidelines



2008 Survey Sheet: Plattsmouth, Nebraska – Main Street Historic District

Survey of Existing Conditions: Buildings (Exterior)		Survey I.D. Number:	35
Name of Structure:	Heritage Pharmacy	Address:	517 Main Street



Number of Stories	2	Historic Name	unknown
Overall Shape	rectangular, three bays	NE Hist Bldg Survey No.	CC14-11
Primary Wall Material(s)	masonry	Historic Use	was once a funeral parlor on second floor
Other Material(s)	terra cotta glazing in front	Year(s) Built	c. 1921
Roof type	flat	Current Use(s)	
Windows/Doors	original upper windows	Style(s)	
		Architect/Builder	architect: James R. Webster for Jess Warga
Alteration(s)	modernized storefront		
Stylistic Feature(s)	brick dentil cornice, brick pilasters, slightly recessed upper rectangular windows with divided lights and fanlights above; small pilasters support round arch window hoods with keystone ornaments; parapet with coping; recessed entry		
Interesting Feature(s)	'WARGA' in tile in entrance floor		
Notes & Comments	residue from removal of previous covering (thin brick veneer)		

Review for Compliance with City of Plattsmouth Design Guidelines for Historic Preservation 2008:

Work to Retain/Preserve	all brick detail; tile floor
Conforming Work	color palette; signage on glass; storefront assembly; location of additional side entry
Work to Restore/Reconstruct	
Non-Conforming Work	alteration of transom windows
Notes & Comments	

517 Main Street



Maintain existing materials and features.

2008 Survey Sheet: Plattsmouth, Nebraska – Main Street Historic District

Survey of Existing Conditions: Buildings (Exterior)

Survey I.D. Number: 36 & 37

Name of Structure: Farmer's Insurance Group/Seams to Be Quilt Shoppe

Address: 505 & 511 Main Street



Number of Stories	2	Historic Name	Rockwood Hall/Rockwood Building
Overall Shape	rectangular, three bays	NE Hist Bldg Survey No.	CC14-10
Primary Wall Material(s)	brick under stucco (parge coat)	Historic Use	original use – unknown; Young Ladies Reading Room Association rented the second floor in 1886, establishing the first library in the city
Other Material(s)	vinyl exterior faux brick	Year(s) Built	c. 1883
Roof type	flat	Current Use(s)	Masonic lodge/insurance office/quilt shop
Windows/Doors	altered windows on second	Style(s)	commercial Italianate
		Architect/Builder	built for Emeline P. Rockwood
Alteration(s)	modernized storefront		
Stylistic Feature(s)	bracketed pressed metal cornice		
Interesting Feature(s)	'ROCKWOOD' in relief at cornice – defines double doors to Masonic hall		
Notes & Comments			

Review for Compliance with City of Plattsmouth Design Guidelines for Historic Preservation 2008:

Work to Retain/Preserve	pressed-metal cornice
Conforming Work	
Work to Restore/Reconstruct	
Non-Conforming Work	addition of veneer on lower façade; awning/signage (color, style, material); altered entrances; doors and windows (style and material); removal of window hoods at upper level; removal of cornice at lintel area; removal of pressed-metal pediment (see historic photos);
Notes & Comments	

511 & 505 Main Street

Reconstruct pressed-metal pediment at upper cornice and pressed metal cornice at lintel area

Reconstruct pressed-metal window hoods

Preserve pressed-metal cornice

Remove parge coat and reconstruct upper floor with windows of proper size, style and material



Select more appropriate signage

Install new door of proper style and material

Select more appropriate awning and signage

Remove veneer at lower facade and reconstruct with historically appropriate material



2008 Survey Sheet: Plattsmouth, Nebraska – Main Street Historic District

Survey of Existing Conditions: Buildings (Exterior)

Survey I.D. Number:

38 & 39

Name of Structure: New Frontier Insurance/Prairie Home Appraisals

Address:

501 Main Street & 106 S. 5th Street



New Frontier Insurance (#38)



Prairie Home Appraisals (#39)

Number of Stories	2	Historic Name	Carruth Block/Wescott Building
Overall Shape	rectangular, three bays	NE Hist Bldg Survey No.	CC14-9
Primary Wall Material(s)	stucco over brick	Historic Use	
Other Material(s)		Year(s) Built	pre-1880
Roof type	flat	Current Use(s)	offices
Windows/Doors	original windows; street windows on east façade bricked in	Style(s)	commercial Italianate
		Architect/Builder	unknown
Alteration(s)	fake stone, parge coat on front façade; transom added when remodeled in the 1910's		
Stylistic Feature(s)	large oriel window with bracketed eaves at second floor on east façade; pressed metal cornice on both facades; building #39 – bracketed eaves, colored leaded glass; stone hoods		
Interesting Feature(s)	'WESCOTT EST. 1879' on tile floor of recessed entry; violet leaded glass transom on north and east facades; stair on east façade partially original, treads replaced		
Notes & Comments	parge coat on base; severe erosion at selected locations		

Review for Compliance with City of Plattsmouth Design Guidelines for Historic Preservation 2008:

Work to Retain/Preserve	pressed metal cornice; tile floor
Conforming Work	
Work to Restore/Reconstruct	metal stair on east façade; hoods above upper windows; color palette could be improved
Non-Conforming Work	bricked in windows on east façade; fake stone veneer on lower front façade; neon signage; removal of window hoods; removal of cornice at lintel area; alteration of lower façade – removal of cast iron elements, transom windows, use of materials (see historic photo)
Notes & Comments	

501 Main Street

Preserve pressed-metal cornice

Select more appropriate color palette

Preserve oriel window

Restore pressed-metal cornice

Remove veneer and reconstruct with historically appropriate material

Restore transom windows

Preserve tile floor



Select more appropriate signage

Reconstruct metal stair

Install windows of correct size, style and material

Install door of correct style and material



2008 Survey Sheet: Plattsmouth, Nebraska – Main Street Historic District

Survey of Existing Conditions: Buildings (Exterior)

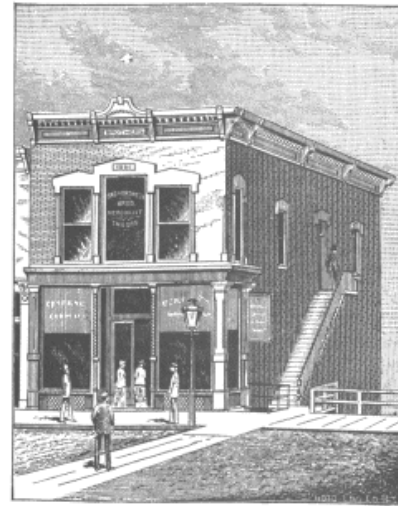
Survey I.D. Number:

40

Name of Structure: vacant

Address:

447 Main Street



Circa 1882

Number of Stories	2	Historic Name	Rasgorshek Building
Overall Shape	rectangular, three bays	NE Hist Bldg Survey No.	CC14-8
Primary Wall Material(s)	masonry	Historic Use	making/selling men's clothing and Stetson hats; second floor was a photography studio
Other Material(s)	rear portion stuccoed; blue glass at storefront	Year(s) Built	c. 1881
Roof type	flat	Current Use(s)	vacant
Windows/Doors	original wood windows	Style(s)	commercial Italianate
		Architect/Builder	built for John & Gabriel Ragorshek

Alteration(s)	modernized storefront; pressed-metal cornice and crown removed
Stylistic Feature(s)	stone window hoods supported by small engaged columns
Interesting Feature(s)	three windows on second story: large rectangular window flanked by two slightly shorter ones; '1881' in relief in center window hood
Notes & Comments	

Review for Compliance with City of Plattsmouth Design Guidelines for Historic Preservation 2008:

Work to	hoods above upper windows
Retain/Preserve	
Conforming Work	
Work to	metal cornice (both upper and lower) and pediment; transom above entry; cast iron columns
Restore/Reconstruct	
Non-Conforming Work	treatment of lower façade (materials, etc.)
Notes & Comments	

447 Main Street

Reconstruct pressed-metal cornice and pediment

Reconstruct pressed-metal cornice and pediment

Preserve hoods and columns

Remove material at lower facade and reconstruct with historically accurate material

Restore windows of historic-ally accurate size (see photo)



Install new door assembly of proper style and material

Remove air conditioning unit from view

Reconstruct column and corner windows

Install doors and windows of the proper size, material and style on west facade
Reconstruct historically accurate metal stair on west facade
Select more appropriate awnings for west facade



2008 Survey Sheet: Plattsmouth, Nebraska – Main Street Historic District

Survey of Existing Conditions: Buildings (Exterior)		Survey I.D. Number:	41
Name of Structure:	The Water Hole	Address:	441 Main Street



Number of Stories	2	Historic Name	unknown
Overall Shape	rectangular, three bays	NE Hist Bldg Survey No.	CC14-116
Primary Wall Material(s)	masonry	Historic Use	
Other Material(s)	cast iron storefront	Year(s) Built	c. 1885
Roof type	flat	Current Use(s)	bar
Windows/Doors	original wood windows	Style(s)	commercial Italianate
		Architect/Builder	unknown
Alteration(s)	modernized storefront		
Stylistic Feature(s)	segmental arched windows with bracketed pressed-metal bracketed hoods; pressed-metal bracketed cornice		
Interesting Feature(s)	side entry to upper story		
Notes & Comments			

Review for Compliance with City of Plattsmouth Design Guidelines for Historic Preservation 2008:

Work to Retain/Preserve	pressed-metal cornice and hoods; cast iron columns; transoms above windows
Conforming Work	color palette
Work to Restore/Reconstruct	cornice at lintel area (see historic photograph for 437 Main Street)
Non-Conforming Work	signage; alterations to lower façade (materials, size and style of windows and door); visible air conditioning unit
Notes & Comments	

441 Main Street

Preserve pressed-metal cornice and hoods

Restore cornice at lintel area

Restore transom windows

Remove air conditioning/vent unit from view

Select more appropriate signage

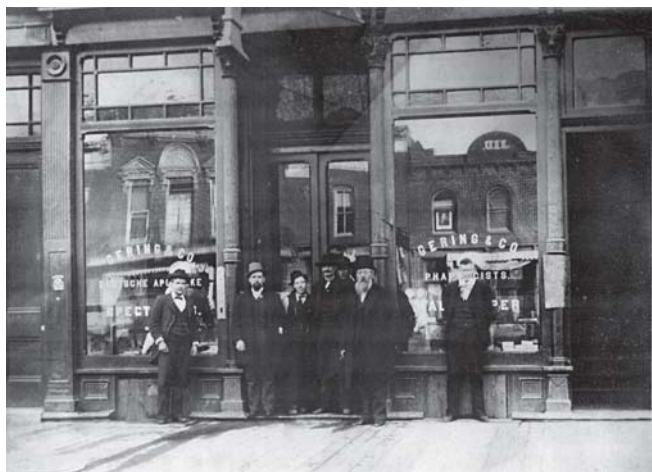
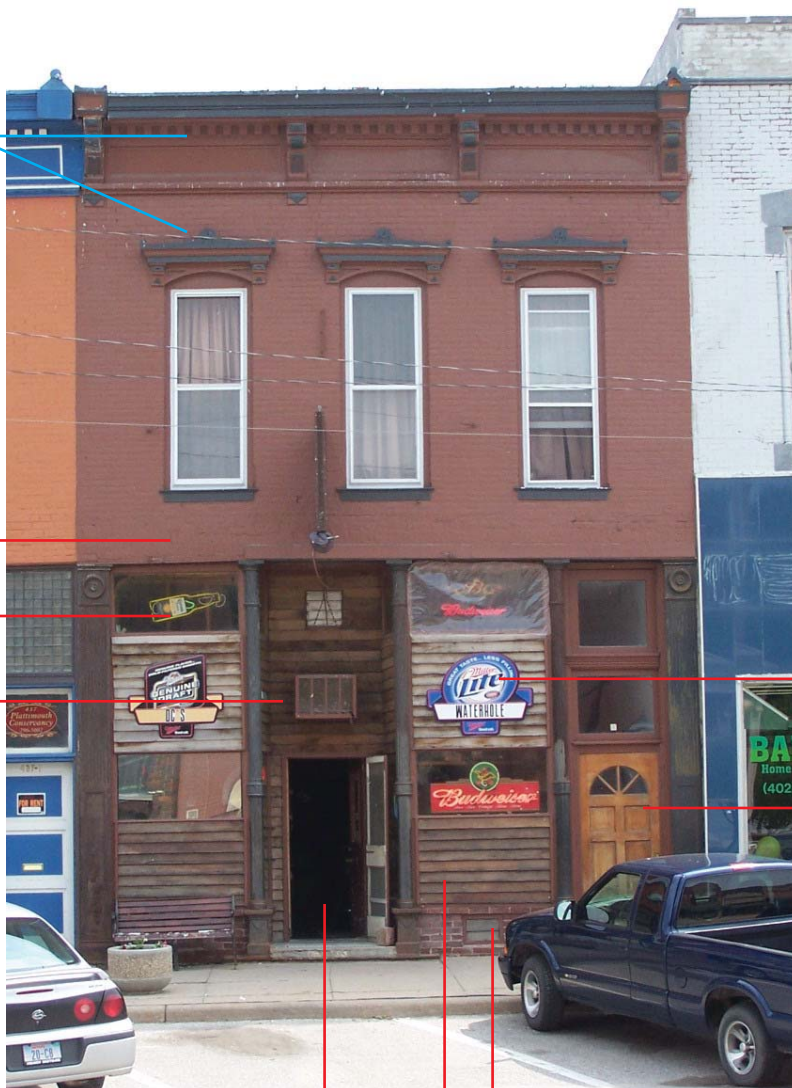
Install new door of proper style and material

Restore lower window panels

Remove existing material and restore windows of the proper size, style and material

Install new door of proper style and material

Similar to 441 Main Street



2008 Survey Sheet: Plattsmouth, Nebraska – Main Street Historic District

Survey of Existing Conditions: Buildings (Exterior)

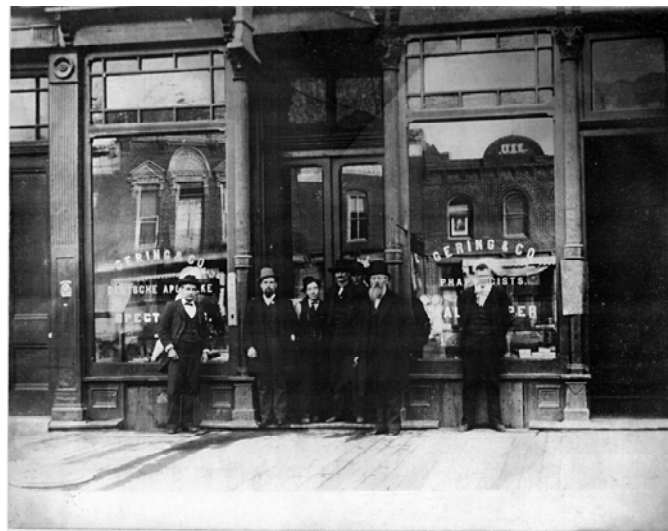
Survey I.D. Number:

42

Name of Structure: The Village

Address:

437 Main Street



Number of Stories	2	Historic Name	unknown
Overall Shape	rectangular, three bays	NE Hist Bldg Survey No.	CC14-116
Primary Wall Material(s)	masonry	Historic Use	unknown
Other Material(s)	cast iron pilasters on storefront	Year(s) Built	c. 1883
Roof type	flat	Current Use(s)	business/store
Windows/Doors	original wood windows; colored leaded glass transoms	Style(s)	commercial Italianate
		Architect/Builder	built by LaFayette O'Neill
Alteration(s)	modernized storefront		
Stylistic Feature(s)	recessed entry; segmentally arched windows with bracketed pressed-metal cornice; prismatic glass transom		
Interesting Feature(s)			
Notes & Comments			

Review for Compliance with City of Plattsmouth Design Guidelines for Historic Preservation 2008:

Work to Retain/Preserve	pressed-metal cornice;
Conforming Work	signage; windows (size)
Work to Restore/Reconstruct	
Non-Conforming Work	
Notes & Comments	

437 Main Street

Preserve pressed-metal cornice

Preserve pressed-metal hoods

Restore cornice at lintel area

Restore transom windows

Restore cast iron elements

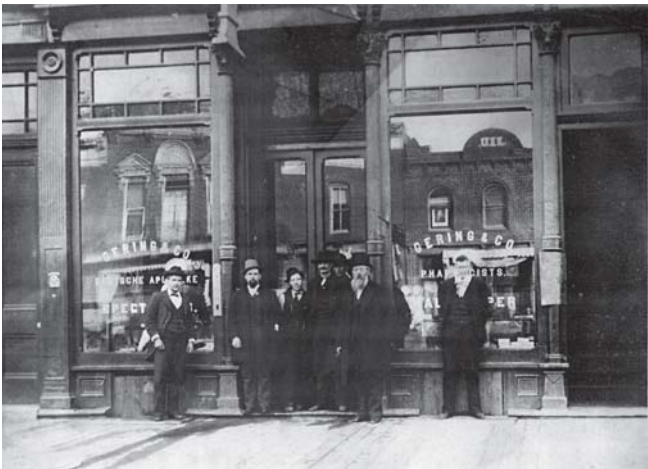
Restoring door assembly as seen in historic photo would be appropriate

Select more appropriate color palette

Preserve remaining cast iron elements

Install new door of proper style and material

Restore lower window panels



2008 Survey Sheet: Plattsmouth, Nebraska – Main Street Historic District

Survey of Existing Conditions: Buildings (Exterior)

Survey I.D. Number: 43

Name of Structure: Higgins Hardware

Address: 433 Main Street



Number of Stories	2	Historic Name	Waterman Building
Overall Shape	rectangular, three bays	NE Hist Bldg Survey No.	CC14-114
Primary Wall Material(s)	masonry	Historic Use	grocery store
Other Material(s)	cast iron pilasters in storefront	Year(s) Built	c. 1882
Roof type	flat	Current Use(s)	hardware store
Windows/Doors		Style(s)	commercial Italianate
		Architect/Builder	built for H. A. Waterman
Alteration(s)	modernized storefront		
Stylistic Feature(s)	recessed entry; segmentally arched second story windows with bracketed pressed-metal hoods; bracketed pressed-metal cornice		
Interesting Feature(s)	'WATERMAN' in relief in cornice		
Notes & Comments			
Review for Compliance with City of Plattsmouth Design Guidelines for Historic Preservation 2008:			
Work to Retain/Preserve	pressed-metal cornice, hoods		
Conforming Work	unpainted brick; display windows (size)		
Work to Restore/Reconstruct			
Non-Conforming Work	signage (size); neon signage; inappropriate infill windows on upper floor (size and material); inappropriate covering of lintel area and transoms		
Notes & Comments			

433 Main Street

Preserve pressed—metal cornice

Leave brick unpainted

Preserve pressed—metal hoods

Install windows of correct size, style and material

Restore cornice at lintel area

Select more appropriate signage

Restore transom windows

Avoid using neon signage



Restore lower window panel with historically appropriate material

2008 Survey Sheet: Plattsmouth, Nebraska – Main Street Historic District

Survey of Existing Conditions: Buildings (Exterior)

Survey I.D. Number:

44

Name of Structure: vacant

Address:

429 Main Street



Number of Stories	2	Historic Name	Hatt & Marthis Building
Overall Shape	rectangular, three bay	NE Hist Bldg Survey No.	CC14-7
Primary Wall Material(s)	masonry	Historic Use	meat market
Other Material(s)	cast iron storefront; parge coat above storefront	Year(s) Built	c. 1885
Roof type	flat	Current Use(s)	vacant
Windows/Doors	infill windows	Style(s)	commercial Italianate
		Architect/Builder	built for A. G. Hatt & John W. Marthis

Alteration(s)

Stylistic Feature(s) segmental arched second story windows with bracketed pressed-metal hoods; bracketed pressed-metal cornice

Interesting Feature(s) transomed side entry to second floor; 'HATT' and 'MARTHS' stated in relief in cornice

Notes & Comments

Review for Compliance with City of Plattsmouth Design Guidelines for Historic Preservation 2008:

Work to pressed-metal cornice, hoods

Retain/Preserve

Conforming Work

Work to

Restore/Reconstruct

Non-Conforming Work inappropriate infill windows (size and material); inappropriate covering of lintel area and transoms; door (style and material)

Notes & Comments

429 Main Street

Preserve pressed—metal
cornice

Preserve pressed—metal hoods

Install windows of
correct size, style
and material

Restore cornice at lintel area

Restore transom
windows

Install new door of proper style and material



2008 Survey Sheet: Plattsmouth, Nebraska – Main Street Historic District

Survey of Existing Conditions: Buildings (Exterior)		Survey I.D. Number:	45
Name of Structure:	A Way with Hair/vacant	Address:	421 & 427 Main Street



Number of Stories	1	Historic Name	n/a
Overall Shape	rectangular	NE Hist Bldg Survey No.	n/a
Primary Wall Material(s)		Historic Use	n/a
Other Material(s)	parge coat	Year(s) Built	
Roof type	flat	Current Use(s)	beauty salon/vacant
Windows/Doors		Style(s)	
		Architect/Builder	unknown
Alteration(s)			
Stylistic Feature(s)			
Interesting Feature(s)			
Notes & Comments			

Review for Compliance with City of Plattsmouth Design Guidelines for Historic Preservation 2008:

Work to	
Retain/Preserve	
Conforming Work	
Work to	
Restore/Reconstruct	
Non-Conforming Work	421 Main Street: removal of pediment; (see historic photo); awning style; color palette; parge coat 427 Main Street: alteration of door/window assembly at left; parge coat (see historic photo)
Notes & Comments	

421 & 427 Main Street

Restore pressed—metal cornice and pediment

Remove or select more appropriate awning

Restore pressed—metal cornice

Restore transom windows

Remove air conditioning/vent unit from view

Select more appropriate color palette



Restore transom window



2008 Survey Sheet: Plattsmouth, Nebraska – Main Street Historic District

Survey of Existing Conditions: Buildings (Exterior)		Survey I.D. Number:	46
Name of Structure:	Diamond Floral/Main Street Jewelers	Address:	417 Main Street



Number of Stories	1 1/2	Historic Name	unknown
Overall Shape	rectangular	NE Hist Bldg Survey No.	CC14-113
Primary Wall Material(s)	masonry	Historic Use	
Other Material(s)		Year(s) Built	1913/c. 1906 - 1912
Roof type	flat	Current Use(s)	florist/jeweler
Windows/Doors	colored glass at transoms – at least partially replaced	Style(s)	
		Architect/Builder	unknown
Alteration(s)	current façade possibly added c. 1930 when it became the Hinky Dinky grocery store		
Stylistic Feature(s)	double-wide storefront; decorative corbelled brick work		
Interesting Feature(s)			
Notes & Comments			

Review for Compliance with City of Plattsmouth Design Guidelines for Historic Preservation 2008:

Work to Retain/Preserve	
Conforming Work	signage on glass
Work to Restore/Reconstruct	
Non-Conforming Work	transom glass
Notes & Comments	

417 Main Street

Inappropriate transom installation



Signage appropriate

Install new door assembly of proper style and material

2008 Survey Sheet: Plattsmouth, Nebraska – Main Street Historic District

Survey of Existing Conditions: Buildings (Exterior)

Survey I.D. Number: 47

Name of Structure: Plattsmouth Fitness Center/
Plattsmouth Chiropractic Center

Address: 405 & 409 Main Street



Number of Stories	2	Historic Name	part of Waterman Opera House
Overall Shape	rectangular; (part of) triple storefront	NE Hist Bldg Survey No.	CC14-112
Primary Wall Material(s)	masonry	Historic Use	Opera House
Other Material(s)	cast iron columns and pilasters	Year(s) Built	c. 1882
Roof type	flat	Current Use(s)	fitness center/clinic
Windows/Doors	infill windows	Style(s)	
		Architect/Builder	architect: G. H. Thompson
Alteration(s)	was originally built as a three story building; fire damaged the building in 1892 and the third story was removed		
Stylistic Feature(s)	pressed-metal wall cornice above second floor windows; segmental arched window openings with voussoirs (segmented arch elements) above; cast metal storefront system		
Interesting Feature(s)	recessed entry at middle storefront		
Notes & Comments			

Review for Compliance with City of Plattsmouth Design Guidelines for Historic Preservation 2008:

Work to	cast iron elements; pressed-metal cornice
Retain/Preserve	
Conforming Work	
Work to	pressed-metal cornice and pediment above existing cornice (see historic photo)
Restore/Reconstruct	
Non-Conforming Work	inappropriate infill windows on upper floor and transom windows; doors (style and materials); painting of solid color at lower façade;
Notes & Comments	

405 & 409 Main Street

Reconstruct pressed-metal cornice and pediment (see historic photo)

Select more appropriate awning and signage

Install windows of the proper size, style and material and reconstruct pressed-metal window hoods



Install new door assemblies of proper style and material

Select more appropriate color palette

Restore transom windows of correct size, style and material



OPERA HOUSE

2008 Survey Sheet: Plattsmouth, Nebraska – Main Street Historic District

Survey of Existing Conditions: Buildings (Exterior)

Survey I.D. Number:

48

Name of Structure:

Albo's Bar

Address:

401 Main Street

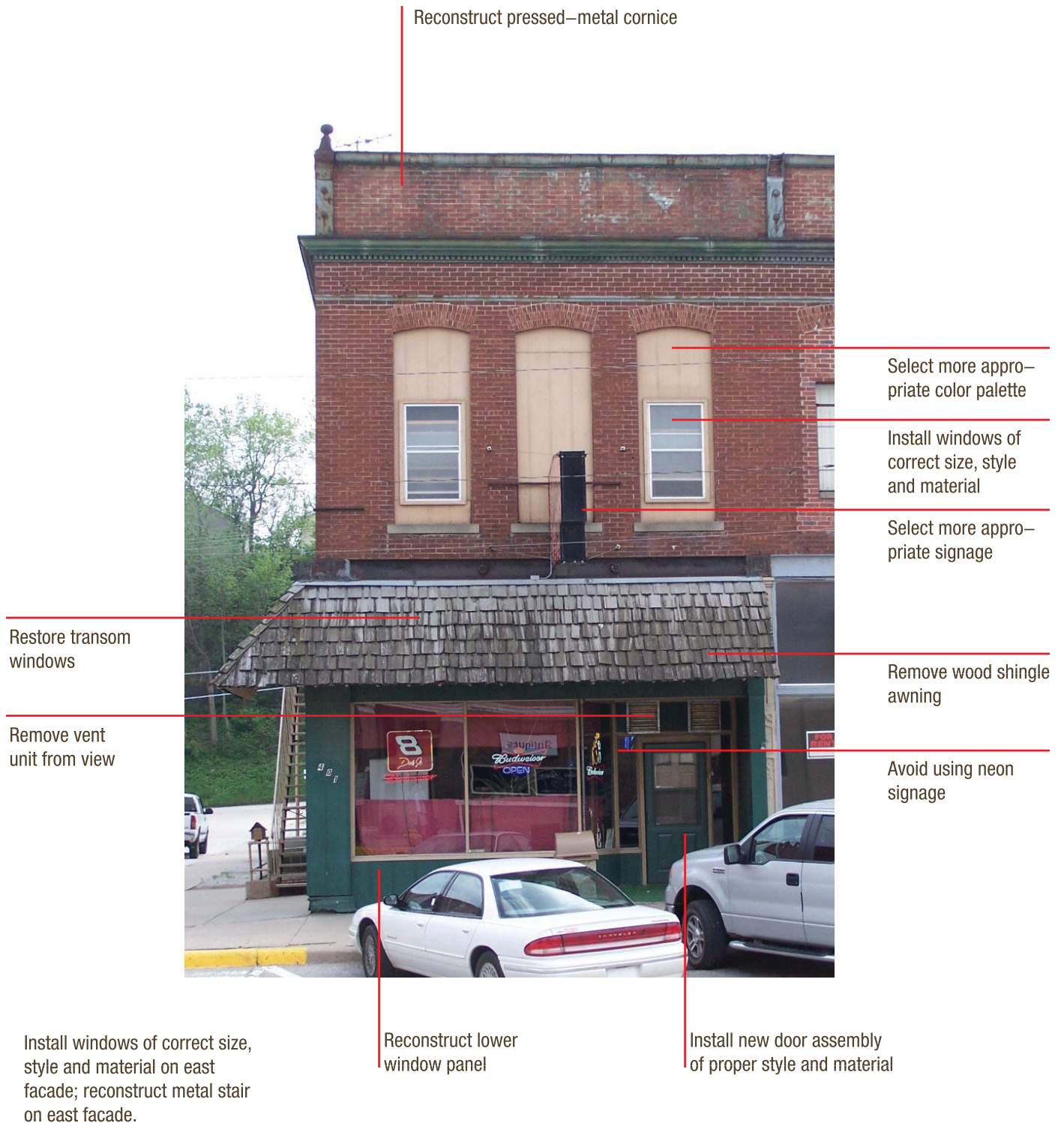


Number of Stories	2	Historic Name	part of Waterman Opera House
Overall Shape	rectangular; (part of) triple storefront	NE Hist Bldg Survey No.	CC14-112
Primary Wall Material	masonry	Historic Use	opera house
Other Material(s)	some cast iron columns at storefront and on east facade	Year(s) Built	c. 1882
Roof type	flat	Current Use(s)	bar
Windows/Doors	infill windows, windows on east facade not original, basement windows bricked in	Style(s)	
		Architect/Builder	architect: G. H. Thompson
Alteration(s)	storefront covered with wood; was originally built as a three story building; fire damaged the building in 1892 and the third story was removed		
Stylistic Feature(s)	pressed-metal wall cornice above second floor windows; segmental arched window openings with voussoirs (segmented arch elements) above		
Interesting Feature(s)			
Notes & Comments	mortar/brick failing at selected locations		

Review for Compliance with City of Plattsmouth Design Guidelines for Historic Preservation 2008:

Work to	pressed-metal cornice, finials; cast iron elements
Retain/Preserve	
Conforming Work	
Work to	pressed-metal cornice above existing cornice (see historic photo)
Restore/Reconstruct	
Non-Conforming Work	wooden shingle awning; inappropriate infill windows on upper floor (size and material); infill of windows on east facade; use of materials on lower facade; door assembly; signage (material); basement windows bricked in
Notes & Comments	

401 Main Street



2008 Survey Sheet: Plattsmouth, Nebraska – Main Street Historic District

Survey of Existing Conditions: Buildings (Exterior)

Survey I.D. Number:

49

Name of Structure:

Gerald Johnson, Attn-Law/
Edward Jones

Address:

339 & 341 Main Street



Number of Stories	2	Historic Name	Budweiser Building
Overall Shape	rectangular; three bays	NE Hist Bldg Survey No.	CC14-6
Primary Wall Material(s)	masonry	Historic Use	saloon /wholesale liquor on first floor; YMCA reading room and cigar factory on second floor
Other Material(s)	brick & pressed-metal pilasters; cast iron columns on storefront	Year(s) Built	c. 1888
Roof type	flat	Current Use(s)	offices
Windows/Doors	replacement windows; infilled windows on west facade	Style(s)	
		Architect/Builder	built for Anheuser-Busch Brewing Co.
Alteration(s)	modernized storefront; windows partially filled in		
Stylistic Feature(s)	bays defined by pilasters; pressed-metal wall cornice above storefront; central arch on second story supported by small pilasters; checkerboard brickwork fills half-round arch above window; two segmental brick arches, enclosing flanking window pairs are visually supported by small pilasters with checkerboard brickwork filling arches above window pairs; brick corbelled wall-cornice		
Interesting Feature(s)			
Notes & Comments			
Review for Compliance with City of Plattsmouth Design Guidelines for Historic Preservation 2008:			
Work to Retain/Preserve	brickwork; cast iron elements		
Conforming Work			
Work to Restore/Reconstruct	pressed-metal cornice and pediment (see historic photo)		
Non-Conforming Work	inappropriate infill windows on upper floor (size), door and window assemblies at lower façade (style, size and materials); inappropriate infill of lintel area		
Notes & Comments			

339 & 341 Main Street



2008 Survey Sheet: Plattsmouth, Nebraska – Main Street Historic District

Survey of Existing Conditions: Buildings (Exterior)		Survey I.D. Number:	50
Name of Structure:	Napa Auto Parts	Address:	337 Main Street



Number of Stories	2	Historic Name	Wetenkamp Block
Overall Shape	rectangular; double wide storefront	NE Hist Bldg Survey No.	CC14-111
Primary Wall Material(s)	masonry	Historic Use	
Other Material(s)		Year(s) Built	c. 1888-92
Roof type	flat	Current Use(s)	auto parts store
Windows/Doors		Style(s)	
		Architect/Builder	unknown

Alteration(s)	
Stylistic Feature(s)	beltline immediately below and above rectangular windows with recessed colored, leaded glass transoms (prismatic glass) and brick voussoir-like window hoods; brick corbelling just below bracketed metal cornice
Interesting Feature(s)	second story divided in to five bays, two bays project out slightly from center and outer bays
Notes & Comments	

Review for Compliance with City of Plattsmouth Design Guidelines for Historic Preservation 2008:

Work to Retain/Preserve	cornice; brickwork
Conforming Work	
Work to Restore/Reconstruct	
Non-Conforming Work	lower façade veneer (materials, color); addition of large opening not original to the building; signage (size, material and color); inappropriate doors and windows at lower façade (style and material); inappropriate windows at upper level (material)
Notes & Comments	

337 Main Street



2008 Survey Sheet: Plattsmouth, Nebraska – Main Street Historic District

Survey of Existing Conditions: Buildings (Exterior)

Survey I.D. Number: 51

Name of Structure: First Nebraska Title and Escrow

Address: 329 Main Street



Number of Stories	2	Historic Name	Vienna Bakery
Overall Shape	rectangular; three bays	NE Hist Bldg Survey No	CC14-5
Primary Wall Material(s)	masonry	Historic Use	bakery/ice cream parlor; duckpin bowling alley in 1940's and 50's
Other Material(s)	cast iron storefront	Year(s) Built	c. 1881
Roof type	flat	Current Use(s)	
Windows/Doors	original wood windows	Style(s)	commercial Italianate
		Architect/Builder	built for William Holtschneider/ William Stadleman (verify)
Alteration(s)	parge coat at base		
Stylistic Feature(s)	recessed entry; colored leaded glass transom; fluted iron pilasters visually support pressed-metal wall cornice above storefront; segmentally arched window openings on second story with pressed-metal lintel and bracketed window hoods; bracketed pressed-metal cornice; cast metal storefront system		
Interesting Feature(s)	side entry to second floor; '1881' in relief in cornice		
Notes & Comments			

Review for Compliance with City of Plattsmouth Design Guidelines for Historic Preservation 2008:

Work to Retain/Preserve	pressed-metal cornice, hoods
Conforming Work	signage on glass; color palette; doors and windows
Work to Restore/Reconstruct	
Non-Conforming Work	
Notes & Comments	

329 Main Street

Preserve pressed—
metal cornice

Leave brick unpainted

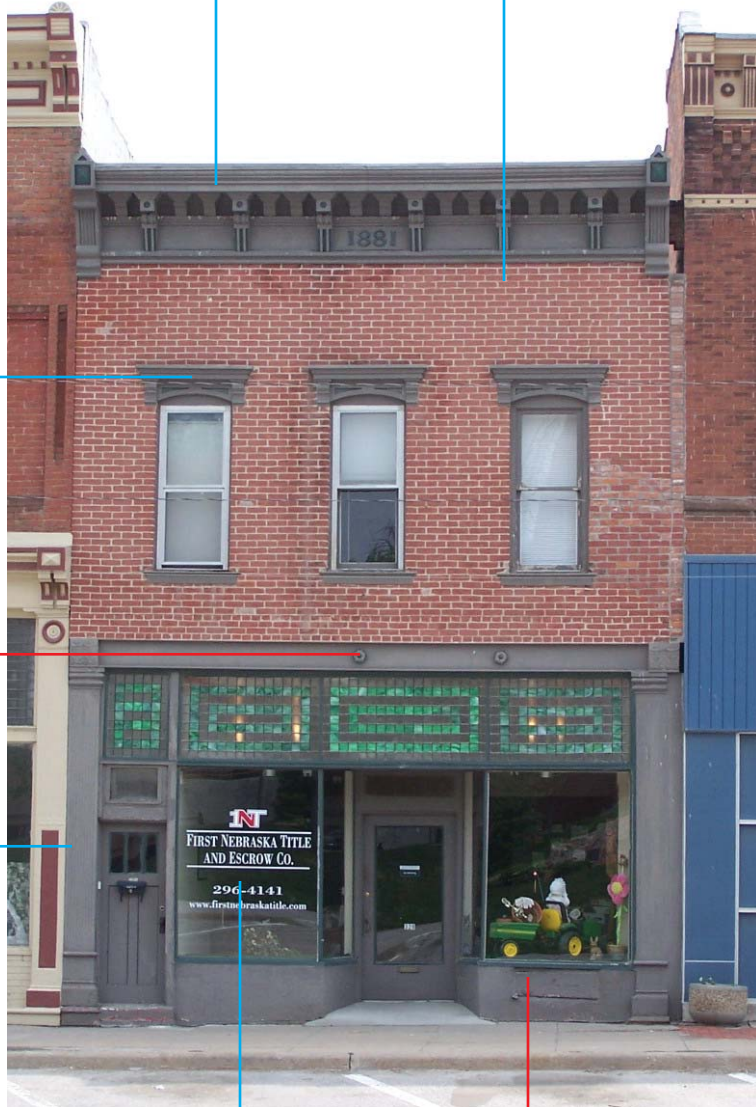
Preserve pressed—metal
hoods

Restore missing decorative
elements

Preserve cast iron elements

Retain appropriate signage

Reconstruct lower window panel



2008 Survey Sheet: Plattsmouth, Nebraska – Main Street Historic District

Survey of Existing Conditions: Buildings (Exterior)

Survey I.D. Number: 52

Name of Structure: ABC Mortgage Lending

Address: 325 Main Street



GENERAL STORE OF JOSEPH V. WECKBACH.

Circa 1882

Number of Stories	2	Historic Name	part of Drew/ Weckbach Block
Overall Shape	rectangular; (part of) triple wide storefront	NE Hist Bldg Survey No.	CC14-3 & 4
Primary Wall Material(s)	masonry	Historic Use	grocery/dry goods store
Other Material(s)	cast iron columns	Year(s) Built	1886
Roof type	flat	Current Use(s)	office
Windows/Doors		Style(s)	commercial Italianate
		Architect/Builder	built for Joseph V. Weckbach/Bryon F. Drew

Alteration(s)

Stylistic Feature(s) recessed entry; color leaded glass (prismatic glass) transoms; cast iron columns and fluted pilasters visually support bracketed pressed-metal wall cornice above storefront; fenestration includes rectangular windows set in units of two and three, each unit capped by decorative pressed-metal bracketed hoods with triangular pediments, stone lug sills; decorative brick work including corbelling, wide bracketed pressed-metal cornice capped by triangular pedimented crown; cast metal storefront system

Interesting Feature(s) side entry to second floor; '1886' in relief in pediment at second story windows; 'WECKBACH' stated in relief in large pediment

Notes & Comments East 2/3 of the Drew/Weckbach Block built in 1881, west 1/3 of block built in 1886

Review for Compliance with City of Plattsmouth Design Guidelines for Historic Preservation 2008:

Work to Retain/Preserve pressed-metal cornice, pediments; cast iron elements

Conforming Work

Work to lettering in pediment

Restore/Reconstruct

Non-Conforming Work infill of window between entries; signage; inappropriate infill windows in upper floor (size and material); inappropriate glass in transom windows

Notes & Comments

526 Main Street



Preserve pressed—
metal cornice and
pediment

Leave brick unpainted

Preserve pressed—metal
hoods

Restore cornice at lintel
area

Preserve cast iron elements
and lintel

Restore transom
windows

Install windows of
correct size, style
and material

Select more appropri-
ate signage

Restore window of proper
size, style and material

Install new door of proper style and material

Reconstruct lower window panel

2008 Survey Sheet: Plattsmouth, Nebraska – Main Street Historic District

Survey of Existing Conditions: Buildings (Exterior)

Survey I.D. Number: 53

Name of Structure: Printing Images Inc.

Address: 321 Main Street



Number of Stories	2	Historic Name	part of Drew/ Weckbach Block
Overall Shape	rectangular; (part of) triple wide storefront	NE Hist Bldg Survey No.	CC14-3 & 4
Primary Wall Material(s)	masonry	Historic Use	grocery/dry goods store
Other Material(s)	cast iron columns	Year(s) Built	1881
Roof type	flat	Current Use(s)	printing services
Windows/Doors		Style(s)	commercial Italianate
		Architect/Builder	built for Joseph V. Weckbach/ Bryon F. Drew

Alteration(s)

Stylistic Feature(s)	recessed entry; color leaded glass transoms; cast iron columns and fluted pilasters visually support bracketed pressed-metal wall cornice above storefront; fenestration includes rectangular windows set in units of two and three, each unit capped by decorative pressed-metal bracketed hoods with triangular pediments, stone lug sills; decorative brick work including corbelling, wide bracketed pressed-metal cornice capped by triangular pedimented crown; cast metal storefront system
----------------------	--

Interesting Feature(s)

Notes & Comments	East 2/3 of the Drew/Weckbach Block built in 1881, west 1/3 of block built in 1886
------------------	--

Review for Compliance with City of Plattsmouth Design Guidelines for Historic Preservation 2008:

Work to Retain/Preserve	pressed-metal cornice, pediments; cast iron elements
Conforming Work	
Work to Restore/Reconstruct	pressed-metal cornice and pediment (see historic photo)
Non-Conforming Work	signage at transom window (material); inappropriate infill upper windows (size and material)
Notes & Comments	

321 Main Street

Reconstruct pressed-metal cornice and pediment (see Fig. 8.0 in Appendix)

Leave brick unpainted

Preserve pressed-metal hoods

Install windows of correct size, style and material

Repair pressed-metal cornice to match each side

Restore transom windows

Preserve cast iron elements

Select more historically accurate signage

Avoid use of neon signage

Reconstruct lower window panel



2008 Survey Sheet: Plattsmouth, Nebraska – Main Street Historic District

Survey of Existing Conditions: Buildings (Exterior)		Survey I.D. Number:	54
Name of Structure:	Printing Images Inc.	Address:	317 Main Street



Number of Stories	2	Historic Name	part of Drew/ Weckbach Block
Overall Shape	rectangular; (part of) triple wide storefront	NE Hist Bldg Survey No.	CC14-3 & 4
Primary Wall Material(s)	masonry	Historic Use	grocery/dry goods store
Other Material(s)	cast iron columns	Year(s) Built	1881
Roof type	flat	Current Use(s)	appliance store
Windows/Doors	some original windows	Style(s)	commercial Italianate
		Architect/Builder	built for Joseph V. Weckbach/ Bryon F. Drew

Alteration(s)	transoms covered by signs
Stylistic Feature(s)	recessed entry; color leaded glass transoms; cast iron columns and fluted pilasters visually support bracketed pressed-metal wall cornice above storefront; fenestration includes rectangular windows set in units of two and three, each unit capped by decorative pressed-metal bracketed hoods with triangular pediments, stone lug sills; decorative brick work including corbelling, wide bracketed pressed-metal cornice capped by triangular pedimented crown
Interesting Feature(s)	side entry to second floor; '1881' in relief in pediment above windows
Notes & Comments	East 2/3 of the Drew/Weckbach Block built in 1881, west 1/3 of block built in 1886; some cornice missing

Review for Compliance with City of Plattsmouth Design Guidelines for Historic Preservation 2008:

Work to Retain/Preserve pressed-metal cornice, pediments at windows; cast iron elements	
Conforming Work	
Work to Restore/Reconstruct	pressed-metal cornice and pediment (see historic photo)
Non-Conforming Work	inappropriate infill windows at upper floor (size and material); infill of transom glass; wood shake elements
Notes & Comments	

317 Main Street

Reconstruct pressed-metal cornice and pediment (see Fig. 8.0 in Appendix)

Leave brick unpainted

Preserve pressed-metal hoods

Remove wooden shingle decoration

Install windows of correct size, style and material

Preserve pressed-metal cornice

Select more appropriate signage

Restore transom windows

Remove wooden shingle decoration

Preserve cast iron elements

Reconstruct lower window panel

Avoid using neon signage

Install new door of proper style and material



2008 Survey Sheet: Plattsmouth, Nebraska – Main Street Historic District

Survey of Existing Conditions: Buildings (Exterior)		Survey I.D. Number:	55
Name of Structure:	vacant	Address:	313 Main Street



Number of Stories	2	Historic Name	Excelsior Building
Overall Shape	rectangular; three bays	NE Hist Bldg Survey No.	CC14-2
Primary Wall Material(s)	masonry	Historic Use	originally a butcher; later a broom factory and a marble monument business
Other Material(s)	cast iron columns	Year(s) Built	c. 1882
Roof type	flat	Current Use(s)	vacant
Windows/Doors	replacement windows, partially boarded	Style(s)	commercial Italianate
		Architect/Builder	built for J. C. & R. Peterson

Alteration(s)	partially modernized storefront
Stylistic Feature(s)	fluted metal pilasters visually support bracketed pressed-metal wall cornice; rectangular window openings on second floor with pressed-metal label moldings capped by semi-elliptical crowns; windows on east side on second floor; bracketed pressed-metal cornice with central semi-elliptical crown; cast metal storefront system
Interesting Feature(s)	'EXCELSIOR' in relief in crown
Notes & Comments	

Review for Compliance with City of Plattsmouth Design Guidelines for Historic Preservation 2008:

Work to Retain/Preserve	pressed –metal cornice, hoods; cast iron elements
Conforming Work	color palette
Work to Restore/Reconstruct	
Non-Conforming Work	infill of lower façade; inappropriate infill windows on upper floor (size and material)
Notes & Comments	

313 Main Street



2008 Survey Sheet: Plattsmouth, Nebraska – Main Street Historic District

Survey of Existing Conditions: Buildings (Exterior)		Survey I.D. Number:	56
Name of Structure:	vacant	Address:	309 Main Street



Number of Stories	1	Historic Name	n/a
Overall Shape	rectangular	NE Hist Bldg Survey No.	n/a
Primary Wall Material(s)	masonry	Historic Use	n/a
Other Material(s)		Year(s) Built	
Roof type	flat	Current Use(s)	vacant
Windows/Doors	glass block	Style(s)	
		Architect/Builder	unknown

Alteration(s)
Stylistic Feature(s)
Interesting Feature(s)
Notes & Comments

Review for Compliance with City of Plattsmouth Design Guidelines for Historic Preservation 2008:

Work to	
Retain/Preserve	
Conforming Work	
Work to	
Restore/Reconstruct	
Non-Conforming	
Work	
Notes & Comments	inappropriate infill building: single story, brick pattern, no central entry, lack of large storefront window



Inappropriate infill building — lack of elements of style as described in the “Plattsmouth Downtown Historic Guidelines.”

2008 Survey Sheet: Plattsmouth, Nebraska – Main Street Historic District

Survey of Existing Conditions: Buildings (Exterior)		Survey I.D. Number:	57
Name of Structure:	Headquarters for Hair	Address:	305 Main Street



Number of Stories	2	Historic Name	Blake Building
Overall Shape	rectangular, four bays	NE Hist Bldg Survey No.	CC14-1
Primary Wall Material(s)	masonry	Historic Use	clothier
Other Material(s)	cast iron columns; glass block	Year(s) Built	1883
Roof type	flat	Current Use(s)	beauty salon
Windows/Doors	replacement windows	Style(s)	commercial Italianate
		Architect/Builder	built for John Blake

Alteration(s)	
Stylistic Feature(s)	cast iron columns and pressed-metal fluted pilasters visually support bracketed pressed-metal wall cornice; recessed entry; rectangular window openings with stone window hoods and lug sills; rectangular window openings on second story of east façade; pressed-metal cornice
Interesting Feature(s)	side entry to second floor
Notes & Comments	

Review for Compliance with City of Plattsmouth Design Guidelines for Historic Preservation 2008:

Work to	side entry
Retain/Preserve	
Conforming Work	
Work to	
Restore/Reconstruct	
Non-Conforming Work	wood shake decoration; inappropriate infill windows and central entrance (style, size and material)
Notes & Comments	adjacent addition is also not appropriate

305 Main Street



2008 Survey Sheet: Plattsmouth, Nebraska – Main Street Historic District

Survey of Existing Conditions: Buildings (Exterior)

Survey I.D. Number: 72

Name of Structure: vacant

Address: 546 Main Street



Number of Stories	3	Historic Name	part of the Fitzgerald Block
Overall Shape	rectangular; (part of) four bays	NE Hist Bldg Survey No	CC14-120
Primary Wall Material(s)	stucco over brick	Historic Use	first floor – First National Bank; second floor – offices; third floor – dance/meeting hall
Other Material(s)		Year(s) Built	c. 1870
Roof type	flat	Current Use(s)	first floor vacant/apartments above
Windows/Doors		Style(s)	commercial Italianate
		Architect/Builder	built for John Fitzgerald
Alteration(s)	renovated in the late 1980's; pressed-metal cornice removed; several windows on second and third stories on west façade bricked in; some modernization of storefront		
Stylistic Feature(s)	cast iron columns and fluted pressed-metal pilaster visually support bracketed, pressed-metal wall cornice above storefront; decorative pressed-metal window hoods over rectangular windows on second and third floor; original stained glass transom; balcony on second floor; cast metal storefront system, star shaped tie rod plates		
Interesting Feature(s)	recessed corner entry; central entry leads to third floor hall		
Notes & Comments	when built, was the largest building in Plattsmouth; west half (# 72 & 73) taller than the east half (#74) to allow for hall, including stage; roof cornices were built in Chicago and shipped to Plattsmouth		

Review for Compliance with City of Plattsmouth Design Guidelines for Historic Preservation 2008:

Work to Retain/Preserve	balconies; pressed-metal cornice, hoods; cast iron elements
Conforming Work	color palette at lower facade
Work to Restore/Reconstruct	brackets/cornice (see historic photo)
Non-Conforming Work	bricked in windows at west facade
Notes & Comments	

2008 Survey Sheet: Plattsmouth, Nebraska – Main Street Historic District

Survey of Existing Conditions: Buildings (Exterior)

Survey I.D. Number: 73

Name of Structure: All About U

Address: 542 Main Street



Number of Stories	3	Historic Name	part of the Fitzgerald Block
Overall Shape	rectangular; (part of) four bays	NE Hist Bldg Survey No.	CC14-120
Primary Wall Material(s)	stucco over brick	Historic Use	first floor – First National Bank; second floor – offices; third floor – dance/meeting hall
Other Material(s)		Year(s) Built	c. 1870
Roof type	flat	Current Use(s)	beauty salon/spa
Windows/Doors		Style(s)	commercial Italianate
		Architect/Builder	built for John Fitzgerald
Alteration(s)	renovated in the late 1980's; pressed-metal cornice removed; some modernization of storefront		
Stylistic Feature(s)	cast iron columns and fluted pressed-metal pilaster visually support bracketed, pressed-metal wall cornice above storefront; decorative pressed-metal window hoods over rectangular windows on second and third; cast metal storefront system, star shaped tie rod plates		
Interesting Feature(s)	recessed entry; central entry leads to third floor hall		
Notes & Comments	when built, was the largest building in Plattsmouth; west half (# 72 & 73) taller than the east half (#74) to allow for hall, including stage; roof cornices were built in Chicago and shipped to Plattsmouth		

Review for Compliance with City of Plattsmouth Design Guidelines for Historic Preservation 2008:

Work to Retain/Preserve	balconies; pressed-metal cornice, hoods; cast iron elements
Conforming Work	signage on glass; color palette at lower facade
Work to Restore/Reconstruct	brackets/cornice (see historic photo)
Non-Conforming Work	
Notes & Comments	

2008 Survey Sheet: Plattsmouth, Nebraska – Main Street Historic District

Survey of Existing Conditions: Buildings (Exterior)

Survey I.D. Number: 74

Name of Structure: vacant

Address: 538 Main Street



Number of Stories	3	Historic Name	part of the Fitzgerald Block
Overall Shape	rectangular; (part of) four bays	NE Hist Bldg Survey No.	CC14-120
Primary Wall Material(s)	stucco over brick	Historic Use	first floor – First National Bank; second floor – offices; third floor – dance/meeting hall
Other Material(s)		Year(s) Built	c. 1870
Roof type	flat	Current Use(s)	vacant/cafe
Windows/Doors		Style(s)	commercial Italianate
		Architect/Builder	built for John Fitzgerald
Alteration(s)	renovated in the late 1980's; pressed-metal cornice removed; some modernization of storefront		
Stylistic Feature(s)	cast iron columns and fluted pressed-metal pilaster visually support bracketed, pressed-metal wall cornice above storefront; decorative pressed-metal window hoods over rectangular windows on second and third floors; cast metal storefront system, star shaped tie rod plates		
Interesting Feature(s)	recessed entries		
Notes & Comments	when built, was the largest building in Plattsmouth; west half (# 72 & 73) taller than the east half (#74) to allow for hall, including stage; roof cornices were built in Chicago and shipped to Plattsmouth		

Review for Compliance with City of Plattsmouth Design Guidelines for Historic Preservation 2008:

Work to Retain/Preserve	pressed-metal cornice, hoods; cast iron elements
Conforming Work	color palette at lower façade; window treatment of transom windows
Work to Restore/Reconstruct	brackets/cornice (see historic photo)
Non-Conforming Work	
Notes & Comments	

2008 Survey Sheet: Plattsmouth, Nebraska – Main Street Historic District

Survey of Existing Conditions: Buildings (Exterior)		Survey I.D. Number:	75
Name of Structure:	The Chocolate Moose Cafe	Address:	534 Main Street



Number of Stories	3	Historic Name	part of the Fitzgerald Block
Overall Shape	rectangular; (part of) four bays	NE Hist Bldg Survey No.	CC14-120
Primary Wall Material(s)	stucco over brick	Historic Use	first floor – First National Bank; second floor – offices; third floor – dance/meeting hall
Other Material(s)		Year(s) Built	c. 1870
Roof type	flat	Current Use(s)	cafe
Windows/Doors		Style(s)	commercial Italianate
		Architect/Builder	built for John Fitzgerald
Alteration(s)	renovated in the late 1980's; pressed-metal cornice removed; some modernization of storefront		
Stylistic Feature(s)	cast iron columns and fluted pressed-metal pilaster visually support bracketed, pressed-metal wall cornice above storefront; decorative pressed-metal window hoods over rectangular windows on second and third floors; cast metal storefront system, star shaped tie rod plates		
Interesting Feature(s)	recessed entries		
Notes & Comments	when built, was the largest building in Plattsmouth; west half (# 72 & 73) taller than the east half (#74) to allow for hall, including stage; roof cornices were built in Chicago and shipped to Plattsmouth		

Review for Compliance with City of Plattsmouth Design Guidelines for Historic Preservation 2008:

Work to Retain/Preserve	pressed-metal cornice, hoods; cast iron elements
Conforming Work	signage on glass; color palette at lower façade; window treatment of transom windows
Work to Restore/Reconstruct	brackets/cornice (see historic photo)
Non-Conforming Work	
Notes & Comments	

542 - 534 Main Street

Reconstruct pressed-metal brackets
(see historic photos)

Preserve metal balconies

Preserve pressed-metal hoods



Preserve cast-iron
elements

Retain appropriate
signage

Installation of proper awning
would be appropriate

Restore windows on west facade with
ones of proper size, style and material.

2008 Survey Sheet: Plattsmouth, Nebraska – Main Street Historic District

Survey of Existing Conditions: Buildings (Exterior)		Survey I.D. Number:	76
Name of Structure:	Di Van's Styling Salon	Address:	530 Main Street



Number of Stories	2	Historic Name	Weber Building
Overall Shape	rectangular; single wide storefront	NE Hist Bldg Survey No.	CC14-121
Primary Wall Material(s)	masonry	Historic Use	bottling works (pop), then saloon
Other Material(s)	original metal top storefront	Year(s) Built	c. 1893
Roof type	flat	Current Use(s)	beauty salon
Windows/Doors	original wood windows	Style(s)	
		Architect/Builder	built for William Weber/mason - D. M. Johns

Alteration(s)	modernized storefront; parge coat at cornice
Stylistic Feature(s)	bracketed, pressed-metal wall cornice with dentils above storefront; leaded-glass transoms on rectangular second story windows; concrete sills; pressed-metal bracketed curved pediment window hoods with sunburst motif
Interesting Feature(s)	recessed entry
Notes & Comments	

Review for Compliance with City of Plattsmouth Design Guidelines for Historic Preservation 2008:

Work to Retain/Preserve	pressed-metal cornice
Conforming Work	
Work to Restore/Reconstruct	upper cornice; installation of a proper awning would be appropriate
Non-Conforming Work	door (material and style); color palette; removal of bay storefront window (see historic photo)
Notes & Comments	

526 Main Street

Restore pressed-metal cornice and pediment
(See Figure 2.0 and 3.0
in Appendix)

Preserve pressed-metal
hoods

Preserve pressed-metal
cornice at lintel area

Remove wood lattice from
transom

Remove ventilation unit from
view

Installation of proper
awning would be
appropriate



Retain appropriate signage

Reconstruct lower window panel

Install new door of proper style and material

Select more appropriate color palette

2008 Survey Sheet: Plattsmouth, Nebraska – Main Street Historic District

Survey of Existing Conditions: Buildings (Exterior)		Survey I.D. Number:	77
Name of Structure:	Pirate's Cove	Address:	526 Main Street



Number of Stories	2	Historic Name	Sherwood Building
Overall Shape	rectangular; four bays	NE Hist Bldg Survey No.	CC14-000
Primary Wall Material(s)	masonry	Historic Use	unknown
Other Material(s)		Year(s) Built	1898
Roof type	flat	Current Use(s)	candy shop
Windows/Doors	original windows on second floor	Style(s)	
		Architect/Builder	probably built by Robert Sherwood

Alteration(s)	storefront redone with wood; transom covered
Stylistic Feature(s)	second story rectangular windows with center two joined; pressed-metal, bracketed, scalloped windo hoods, metal sills; bracketed concrete and brick cornice; pressed-metal pedimented crown
Interesting Feature(s)	'SHERWOOD' in relief in pediment; recessed entry; side door to second floor
Notes & Comments	

Review for Compliance with City of Plattsmouth Design Guidelines for Historic Preservation 2008:

Work to Retain/Preserve	pressed-metal cornice, pediment, hoods
Conforming Work	color palette
Work to Restore/Reconstruct	installation of a proper awning would be appropriate
Non-Conforming Work	main entry door (style and material); infill of transom windows
Notes & Comments	

526 Main Street

Preserve pressed-metal cornice and pediment

Leave brick unpainted

Preserve pressed-metal hoods

Restore cornice at lintel area

Restore transom windows

Preserve cast iron elements

Installation of proper awning would be appropriate



Retain appropriate signage

Reconstruct lower window panel

Install new door of proper style and material

Select more appropriate color palette



2008 Survey Sheet: Plattsmouth, Nebraska – Main Street Historic District

Survey of Existing Conditions: Buildings (Exterior)

Survey I.D. Number: 78

Name of Structure: vacant

Address: 522 Main Street



Number of Stories	2	Historic Name	
Overall Shape	rectangular; three bay	NE Hist Bldg Survey No.	CC14-122
Primary Wall Material(s)	masonry (painted)	Historic Use	
Other Material(s)		Year(s) Built	c. 1885
Roof type	flat	Current Use(s)	vacant
Windows/Doors		Style(s)	
		Architect/Builder	unknown
Alteration(s)	modernized storefront		
Stylistic Feature(s)	two over two windows; corbelled brick cornice		
Interesting Feature(s)			
Notes & Comments	brick cornice eroded; brick is bowing out		

Review for Compliance with City of Plattsmouth Design Guidelines for Historic Preservation 2008:

Work to Retain/Preserve	
Conforming Work	color palette, windows on upper level (style)
Work to Restore/Reconstruct	installation of a proper awning would be appropriate
Non-Conforming Work	lower windows and door (style and material); infill of transom windows
Notes & Comments	

522 Main Street

Some brick on facade in need of repair

Preserve brick cornice

Preserve brick hoods

Restore transom windows

Reconstruct lower facade with historically accurate material

Installation of proper awning would be appropriate

Select more historically sensitive signage

Install new door of proper style and material



2008 Survey Sheet: Plattsmouth, Nebraska – Main Street Historic District

Survey of Existing Conditions: Buildings (Exterior)

Survey I.D. Number: 79

Name of Structure: Omaha Title and Escrow

Address: 518 Main Street



Number of Stories	2	Historic Name	V. V. Leonard Building
Overall Shape	rectangular; three bay	NE Hist Bldg Survey No.	CC14-18
Primary Wall Material(s)	masonry (painted)	Historic Use	photography/art studio
Other Material(s)		Year(s) Built	c. 1886
Roof type	flat	Current Use(s)	office
Windows/Doors		Style(s)	
		Architect/Builder	built for V.V. Leonard
Alteration(s)	awning added; modernized storefront		
Stylistic Feature(s)	pressed-metal wall cornice above rectangular windows; elaborately decorated pressed-metal cornice with brackets; topped by pressed-metal pedimented crown		
Interesting Feature(s)	recessed entry		
Notes & Comments	artist studio on second floor had a skylight		

Review for Compliance with City of Plattsmouth Design Guidelines for Historic Preservation 2008:

Work to

Retain/Preserve

Conforming Work color palette, awning, signage on glass, side entry door, use of window treatments at second floor

Work to Restore/Reconstruct decoration at pediment (see partial historic photo)

Non-Conforming Work main entry door (style and material)

Notes & Comments

518 Main Street

Preserve pressed—
metal cornice and pediment

Preserve pressed—metal
cornice

Retain historically accurate
awning

Retain historically accurate
door



Retain appropriate signage

Install new door of proper style and material

2008 Survey Sheet: Plattsmouth, Nebraska – Main Street Historic District

Survey of Existing Conditions: Buildings (Exterior)

Survey I.D. Number:

80

Name of Structure: The Rubin Companies

Address:

516 Main Street



The Present Bank Building

Number of Stories	2	Historic Name	First National Bank
Overall Shape	rectangular; single wide storefront	NE Hist Bldg Survey No.	CC14-19
Primary Wall Material(s)	masonry	Historic Use	dry goods store, bank c. 1908
Other Material(s)		Year(s) Built	c. 1885
Roof type	flat	Current Use(s)	office
Windows/Doors		Style(s)	Neo-classical revival (second floor)
		Architect/Builder	unknown

Alteration(s)	modernized storefront; window on second floor filled in; believed to have been remodeled in 1908/1911 for bank
Stylistic Feature(s)	corner piers visually support wall cornice with triangular pediment; large round arched window opening on second floor with oversized keystone; egg and dart detail above keystone ornament in parapet wall
Interesting Feature(s)	
Notes & Comments	Storefront may be intact under 'modernization' (need to verify)

Review for Compliance with City of Plattsmouth Design Guidelines for Historic Preservation 2008:

Work to Retain/Preserve	detailing of upper level
Conforming Work	
Work to Restore/Reconstruct	lower façade (see historic photo): columns, door, windows, transom windows
Non-Conforming Work	infill of lower brick façade, door and windows at lower façade (size, style, material); infill of upper windows; color palette; awning (shape/size)
Notes & Comments	

516 Main Street

Preserve cornice, pediment and other details

Select more appropriate color palette

Reconstruct window assembly with proper sizes, styles and materials

Remove awning



Remove lower facade and reconstruct with historically appropriate materials, doors, windows, transoms, etc. (See Fig. 9 in Appendix also.)

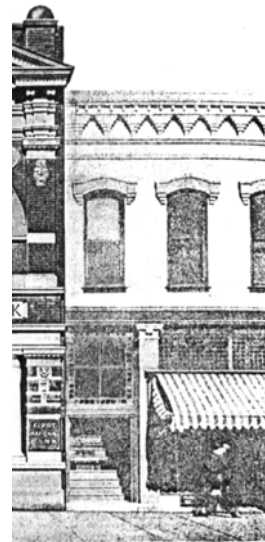
2008 Survey Sheet: Plattsmouth, Nebraska – Main Street Historic District

Survey of Existing Conditions: Buildings (Exterior)

Survey I.D. Number: 81

Name of Structure: Pro's Shirt Shop

Address: 510 Main Street



Number of Stories	2	Historic Name	
Overall Shape	rectangular; four bays	NE Hist Bldg Survey No.	CC14-123
Primary Wall Material(s)	masonry (painted)	Historic Use	dry goods store
Other Material(s)		Year(s) Built	c. 1885
Roof type	flat	Current Use(s)	screen printing business
Windows/Doors	windows boarded up	Style(s)	
		Architect/Builder	unknown
Alteration(s)	modernized storefront (thin brick used)		
Stylistic Feature(s)	segmentally arched window openings on second floor with arched pressed-metal window hoods; corbelled brick cornice		
Interesting Feature(s)			
Notes & Comments	storefront appears to be intact under ‘modernization’ (need to verify)		
Review for Compliance with City of Plattsmouth Design Guidelines for Historic Preservation 2008:			
Work to Retain/Preserve	brick cornice; window hoods		
Conforming Work	signage on awning		
Work to Restore/Reconstruct	lower façade (see partial historic photo): door, windows, transom windows		
Non-Conforming Work	infill of lower brick façade, door and windows (style and size); infill of upper windows; signage (color); awning (shape/size); color palette		
Notes & Comments			

516 Main Street

Preserve brick cornice

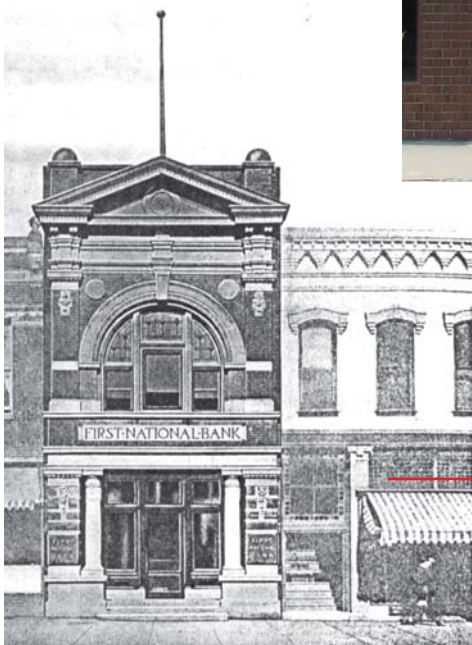
Preserve brick hoods

Select more appropriate color palette

Install windows of correct size, style and material

Replace awning with more historically accurate one

Select more appropriate signage



Remove lower facade and reconstruct with historically appropriate materials, doors, windows, transoms, etc.

2008 Survey Sheet: Plattsmouth, Nebraska – Main Street Historic District

Survey of Existing Conditions: Buildings (Exterior)

Survey I.D. Number: 82

Name of Structure: Johnson and Touchstone Law Offices

Address: 506 Main Street



Number of Stories	1	Historic Name	Farmer's State Bank
Overall Shape	square; single wide storefront	NE Hist Bldg Survey No.	CC14-124
Primary Wall Material(s)	stone	Historic Use	bank
Other Material(s)	glazed tile	Year(s) Built	c. 1927 (1923-9)
Roof type	flat	Current Use(s)	offices
Windows/Doors		Style(s)	
		Architect/Builder	built for Farmer's State Bank
Alteration(s)	modernized storefront with metal canopy		
Stylistic Feature(s)	original transom; stepped parapet front		
Interesting Feature(s)	unusual transom – incorporating 8 square paned windows; 'Farmer's State Bank' in relief in wall cornice		
Notes & Comments			

Review for Compliance with City of Plattsmouth Design Guidelines for Historic Preservation 2008:

Work to Retain/Preserve	
Conforming Work	signage on glass
Work to Restore/Reconstruct	
Non-Conforming Work	
Notes & Comments	façade in need of cleaning

506 Main Street

Stone in need of cleaning



Repair transoms

Window covering style inappropriate

Retain historically acceptable awning

Retain appropriate signage

2008 Survey Sheet: Plattsmouth, Nebraska – Main Street Historic District

Survey of Existing Conditions: Buildings (Exterior)

Survey I.D. Number: 83

Name of Structure: Antiques on Main

Address: 502 Main Street



Number of Stories	2	Historic Name	Sherwood Block
Overall Shape	rectangular; three bay	NE Hist Bldg Survey No.	CC14-125
Primary Wall Material(s)	masonry	Historic Use	cobbler
Other Material(s)	marble tile	Year(s) Built	c. 1883
Roof type	flat	Current Use(s)	shop
Windows/Doors	windows partially bricked in on second floor; windows on east façade bricked in	Style(s)	
		Architect/Builder	built for Robert Sherwood
Alteration(s)	some windows bricked in; modernized storefront; metal canopy		
Stylistic Feature(s)	brick wall cornice above storefront; corbelled brick cornice on second floor; additional retail space along east façade;		
Interesting Feature(s)			
Notes & Comments	stone sills in need of repair		

Review for Compliance with City of Plattsmouth Design Guidelines for Historic Preservation 2008:

Work to Retain/Preserve	cornice
Conforming Work	signage on glass and awning
Work to Restore/Reconstruct	
Non-Conforming Work	inappropriate infill windows on upper floor (size and material); main entry door (style and material); windows on east façade bricked in
Notes & Comments	

502 Main Street

Reconstruct pressed-metal cornice (See Fig. 1.0 in Appendix)

Preserve brick cornice

Leave brick unpainted

Preserve pressed-metal hoods

Restore cornice at lintel area

Install windows of correct size, style and material

Stone sills in need of repair

Signage on awning appropriate

Non-retractable barrel style awning inappropriate

Retain appropriate signage

Install new door assembly of proper style and material



2008 Survey Sheet: Plattsmouth, Nebraska – Main Street Historic District

Survey of Existing Conditions: Buildings (Exterior)		Survey I.D. Number:	84
Name of Structure:	Plattsmouth State Bank	Address:	446 Main Street



Number of Stories	2	Historic Name	n/a
Overall Shape	rectangular	NE Hist Bldg Survey No.	n/a
Primary Wall Material(s)	masonry	Historic Use	n/a
Other Material(s)		Year(s) Built	c. 2004
Roof type	flat	Current Use(s)	bank
Windows/Doors		Style(s)	
		Architect/Builder	unknown

Alteration(s)	
Stylistic Feature(s)	
Interesting Feature(s)	
Notes & Comments	

Review for Compliance with City of Plattsmouth Design Guidelines for Historic Preservation 2008:

Work to	
Retain/Preserve	
Conforming Work	
Work to	
Restore/Reconstruct	
Non-Conforming Work	
Notes & Comments	acceptable infill building (sensitive to historic details, materials and proportions)

446 Main Street



Acceptable infill building.

2008 Survey Sheet: Plattsmouth, Nebraska – Main Street Historic District

Survey of Existing Conditions: Buildings (Exterior)

Survey I.D. Number: 85

Name of Structure: Plattsmouth State Bank

Address: 438 Main Street



Number of Stories	2	Historic Name	Unruh Building/Schmidtman's
Overall Shape	rectangular; three bays	NE Hist Bldg Survey No.	CC14-20
Primary Wall Material(s)	masonry	Historic Use	furniture store/harness shop – c. 1900/appliance and hardware store – c. 1920
Other Material(s)	newer glazed tile	Year(s) Built	c. 1885
Roof type	flat	Current Use(s)	bank
Windows/Doors	replacement windows on second floor; new windows, door on storefront	Style(s)	
		Architect/Builder	built for J. I. Unruh
Alteration(s)	c. 1920's – modernized by William Schmidtman, added decorative glass; transoms on second floor bricked in		
Stylistic Feature(s)	recessed entry; colored, leaded glass transom; stone lentil sills below rectangular windows on second floor; brick corner pilasters visually supporting decorative brick wall cornice		
Interesting Feature(s)	'WM. SCHMIDTMANN' in decorative glass in transom		
Notes & Comments	entrance is 'false' – this building is a continuation of Plattsmouth State Bank		

Review for Compliance with City of Plattsmouth Design Guidelines for Historic Preservation 2008:

Work to Retain/Preserve	brick detailing; transom decorative glass
Conforming Work	window and door styles at lower façade; color palette
Work to Restore/Reconstruct	
Non-Conforming Work	
Notes & Comments	

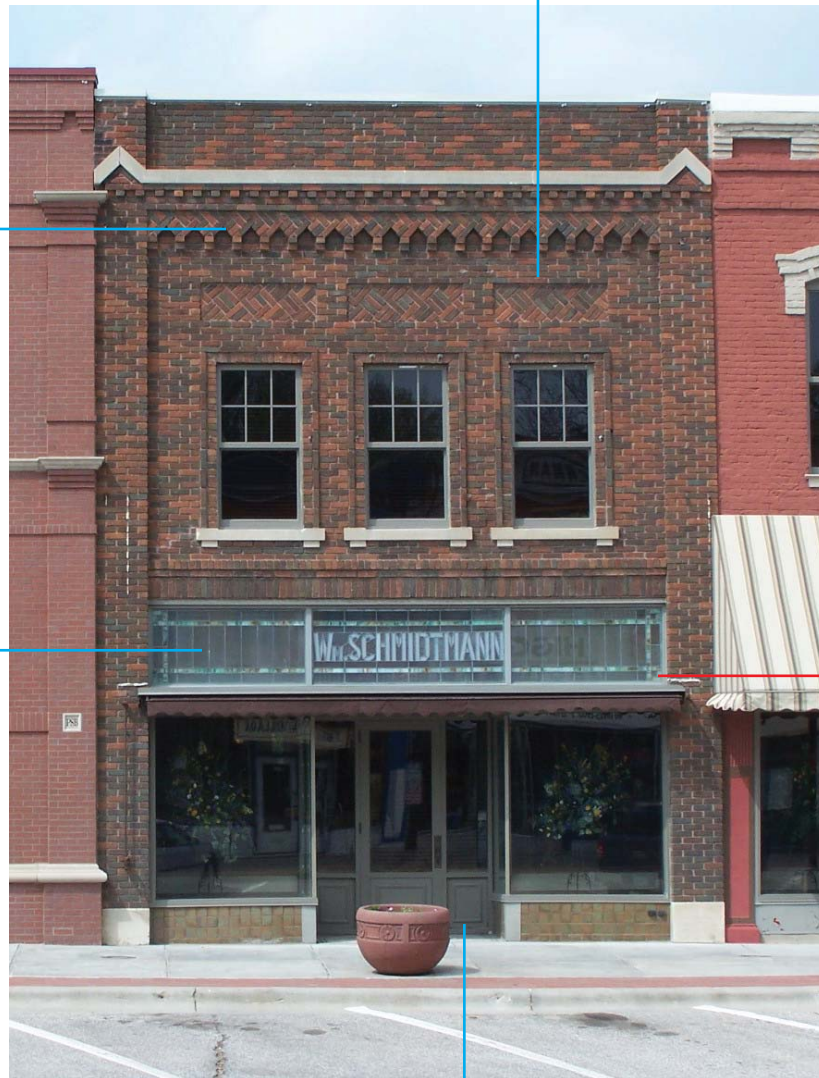
438 Main Street

Leave brick unpainted

Preserve brick corbelling
and other brick and stone
details

Preserve decorative glass

Installation of proper
awning would be
appropriate



Replacement doors and windows
historically accurate

2008 Survey Sheet: Plattsmouth, Nebraska – Main Street Historic District

Survey of Existing Conditions: Buildings (Exterior)

Survey I.D. Number: 86

Name of Structure: Plattsmouth State Bank

Address: 436 Main Street



Number of Stories	2	Historic Name
Overall Shape	rectangular; three bays	NE Hist Bldg Survey No. CC14-21
Primary Wall Material(s)	masonry (painted)	Historic Use
Other Material(s)	cast iron pilasters	Year(s) Built c. 1881
Roof type	flat	Current Use(s) bank
Windows/Doors	replacement windows on both levels; new door	Style(s)
		Architect/Builder unknown

Alteration(s)	plastered over transom; modernized storefront
Stylistic Feature(s)	recessed entry; brick segmentally arched window hoods; brick beltline; corbelled brick cornice
Interesting Feature(s)	side entry to second floor
Notes & Comments	entrance is 'false' – this building is a continuation of Plattsmouth State Bank

Review for Compliance with City of Plattsmouth Design Guidelines for Historic Preservation 2008:

Work to	brick cornice, hoods
Retain/Preserve	
Conforming Work	color palette, awning, window and door styles
Work to	
Restore/Reconstruct	
Non-Conforming Work	
Notes & Comments	

436 Main Street

Preserve brick corbelling
and other brick and stone
details

Preserve brick window
hoods

Retain historically accurate
awning



Replacement doors and windows
historically accurate

2008 Survey Sheet: Plattsmouth, Nebraska – Main Street Historic District

Survey of Existing Conditions: Buildings (Exterior)

Survey I.D. Number: 87

Name of Structure: Aaron James Booksellers

Address: 430 & 432 Main Street



Number of Stories	2	Historic Name	Stadelman Building
Overall Shape	rectangular; three bays	NE Hist Bldg Survey No.	CC14-22
Primary Wall Material(s)	masonry	Historic Use	jewelry store; restaurant
Other Material(s)		Year(s) Built	c. 1888 - 92
Roof type	flat	Current Use(s)	bookstore
Windows/Doors		Style(s)	
		Architect/Builder	built for William Stadleman by W. H. Pickens
Alteration(s)	new railing on walkout; bead board replaced on original balcony		
Stylistic Feature(s)	rusticated block corner pilasters; recessed entry; second floor walkout with pressed metal semi-round pediment with sunburst motif above door; triangular pediments above rectangular windows; wrought iron railing; large paired brackets on pressed-metal cornice; central pedimented crown; triangular finials at corners; cast metal storefront system		
Interesting Feature(s)	transom above side entry to second floor		
Notes & Comments			
Review for Compliance with City of Plattsmouth Design Guidelines for Historic Preservation 2008:			
Work to Retain/Preserve	pressed-metal cornice, pediment, hoods; cast iron elements; colored glass at transom on second floor		
Conforming Work	color palette		
Work to Restore/Reconstruct			
Non-Conforming Work			
Notes & Comments			

430 Main Street

Leave brick unpainted

Preserve pressed-metal cornice and pediment

Preserve pressed-metal hoods

Preserve balcony doors

Preserve metal balconies

Preserve cast iron elements



Reconstruct lower window panel

Install door of proper style and material

2008 Survey Sheet: Plattsmouth, Nebraska – Main Street Historic District

Survey of Existing Conditions: Buildings (Exterior)		Survey I.D. Number:	88
Name of Structure:	Hefner Chiropractic Center	Address:	426 Main Street



Number of Stories	2?	Historic Name	n/a
Overall Shape	rectangular	NE Hist Bldg Survey No.	n/a
Primary Wall Material(s)		Historic Use	
Other Material(s)		Year(s) Built	
Roof type	flat	Current Use(s)	clinic
Windows/Doors		Style(s)	
		Architect/Builder	unknown
Alteration(s)	thin brick veneer, metal siding on modernized storefront		
Stylistic Feature(s)			
Interesting Feature(s)			
Notes & Comments			

Review for Compliance with City of Plattsmouth Design Guidelines for Historic Preservation 2008:

Work to	location of entries
Retain/Preserve	
Conforming Work	
Work to	
Restore/Reconstruct	
Non-Conforming Work	materials used (metal siding and brick veneer), windows (size and style); door (style and material); signage
Notes & Comments	

426 Main Street

Remove metal facade to expose possible original materials



Installation of proper awning would be appropriate

Install windows of proper size, style and material

Retain location of existing entries

Remove false veneer to expose possible original materials
Install new door of proper style and material

2008 Survey Sheet: Plattsmouth, Nebraska – Main Street Historic District

Survey of Existing Conditions: Buildings (Exterior)		Survey I.D. Number:	89
Name of Structure:	Mom's Café	Address:	422 Main Street

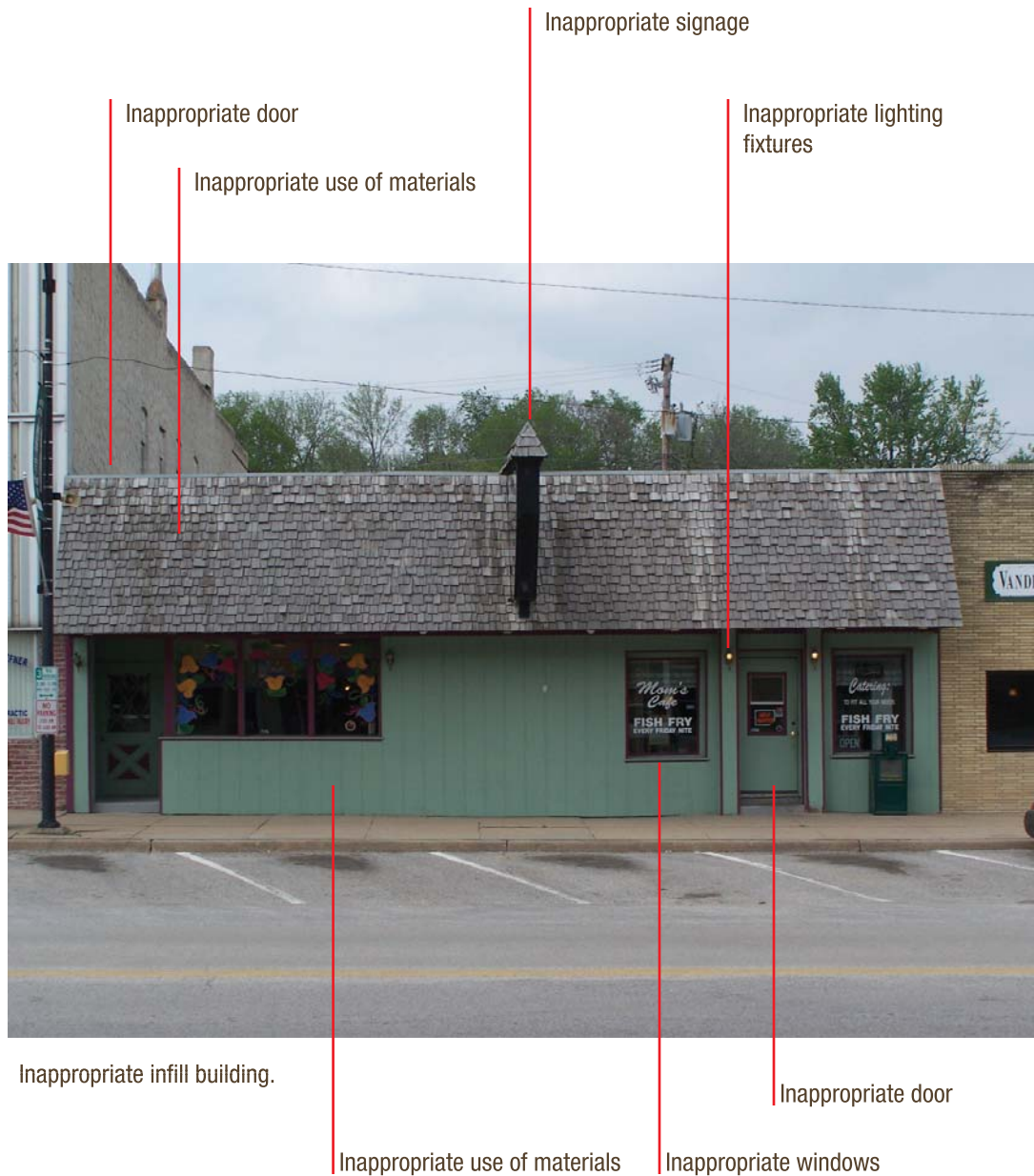


Number of Stories	1	Historic Name	n/a
Overall Shape	rectangular	NE Hist Bldg Survey No.	n/a
Primary Wall Material(s)	wood, brick underneath	Historic Use	
Other Material(s)		Year(s) Built	
Roof type	flat	Current Use(s)	café
Windows/Doors		Style(s)	
		Architect/Builder	unknown
Alteration(s)			
Stylistic Feature(s)			
Interesting Feature(s)			
Notes & Comments			

Review for Compliance with City of Plattsmouth Design Guidelines for Historic Preservation 2008:

Work to	
Retain/Preserve	
Conforming Work	
Work to	
Restore/Reconstruct	
Non-Conforming	
Work	
Notes & Comments	inappropriate infill building; inappropriate window sizes and styles, signage, wooden shakes, inappropriate use of materials

422 Main Street



2008 Survey Sheet: Plattsmouth, Nebraska – Main Street Historic District

Survey of Existing Conditions: Buildings (Exterior)

Survey I.D. Number: 90

Name of Structure: VanderVeen & Goracke, LLC.

Address: 416 Main Street



Number of Stories	1	Historic Name	n/a
Overall Shape	rectangular	NE Hist Bldg Survey No.	n/a
Primary Wall Material(s)	masonry	Historic Use	
Other Material(s)		Year(s) Built	
Roof type	flat	Current Use(s)	office
Windows/Doors		Style(s)	
		Architect/Builder	unknown
Alteration(s)			
Stylistic Feature(s)			
Interesting Feature(s)			
Notes & Comments			

Review for Compliance with City of Plattsmouth Design Guidelines for Historic Preservation 2008:

Work to

Retain/Preserve

Conforming Work

Work to

Restore/Reconstruct

Non-Conforming

Work

Notes & Comments inappropriate infill building; lack of 'building elements' (see guide), inappropriate door and window (size, style, location)

416 Main Street

Inappropriate style of brick

Retain appropriate signage



Inappropriate infill building.

Inappropriate door

Inappropriate windows

2008 Survey Sheet: Plattsmouth, Nebraska – Main Street Historic District

Survey of Existing Conditions: Buildings (Exterior)		Survey I.D. Number:	91
Name of Structure:	The Journal	Address:	410 Main Street



Number of Stories	1?	Historic Name	n/a
Overall Shape	rectangular	NE Hist Bldg Survey No.	n/a
Primary Wall Material(s)		Historic Use	
Other Material(s)		Year(s) Built	
Roof type	flat	Current Use(s)	newspaper office
Windows/Doors		Style(s)	
		Architect/Builder	unknown

Alteration(s)	
Stylistic Feature(s)	
Interesting Feature(s)	
Notes & Comments	infill building

Review for Compliance with City of Plattsmouth Design Guidelines for Historic Preservation 2008:

Work to Retain/Preserve	
Conforming Work	
Work to Restore/Reconstruct	
Non-Conforming Work	
Notes & Comments	inappropriate infill building: lack of 'building elements' (see guide), inappropriate door and windows (size, style, location)

410 Main Street

Signage is appropriate

Inappropriate door



Inappropriate infill building.

Inappropriate use of materials

Inappropriate windows

2008 Survey Sheet: Plattsmouth, Nebraska – Main Street Historic District

Survey of Existing Conditions: Buildings (Exterior)

Survey I.D. Number: 92

Name of Structure: River House

Address: 402 Main Street



Number of Stories	2	Historic Name	Gund Building
Overall Shape	rectangular; three bays	NE Hist Bldg Survey No.	CC14-23
Primary Wall Material(s)	masonry	Historic Use	tavern
Other Material(s)		Year(s) Built	c. 1900
Roof type	flat	Current Use(s)	cafe
Windows/Doors	original windows on second floor	Style(s)	Neo-Classical Revival
		Architect/Builder	built for John Gund Brewing Company by Edward Donat

Alteration(s)

Stylistic Feature(s) recessed corner entry; brick corner pilasters visually support wall cornice above storefront; decorative elements in wall cornice; the upper edge of wall cornice contains egg and dart detail at sill level; brick pilasters with Corinthian capitals at corners and between windows visually support bracketed second story wall cornice; windows on the south façade and on the east over the entry are round arched with hoods and oversized keystone

Interesting Feature(s) ornament above the entrance of a man with a glass of beer; 'GUND' and 'LA CROSSE' above and below ornament

Notes & Comments

Review for Compliance with City of Plattsmouth Design Guidelines for Historic Preservation 2008:

Work to Retain/Preserve pressed-metal decorative elements (cornice, capitals, etc.); ornament above main entrance; door assembly

Conforming Work signage on glass

Work to Restore/Reconstruct decorative elements (cornice, capitals, etc.) in need of repair

Non-Conforming Work infill of display windows; signage (material)

Notes & Comments

402 Main Street

Decorative elements in need of repair

Preserve pressed—
metal cornice

Leave brick unpainted

Preserve decorative hoods
and other ornament

Windows in need of
repair

Retain cornices at lintel
area

Installation of proper
awning would be
appropriate

Restore windows

Retain door and
window assembly

Retain appropriate signage



2008 Survey Sheet: Plattsmouth, Nebraska – Main Street Historic District

Survey of Existing Conditions: Buildings (Exterior)

Survey I.D. Number: 93

Name of Structure: Clips

Address: 108 N. 4th Street



Number of Stories	2	Historic Name	part of Gund Building
Overall Shape	rectangular	NE Hist Bldg Survey No.	CC14-23
Primary Wall Material(s)	masonry	Historic Use	tavern
Other Material(s)		Year(s) Built	c. 1900
Roof type	flat	Current Use(s)	beauty salon
Windows/Doors	new doors	Style(s)	Neo-Classical Revival
		Architect/Builder	unknown

Alteration(s)

Stylistic Feature(s) decorative elements in wall cornice; the upper edge of wall cornice contains egg and dart detail at sill level; brick pilasters with Corinthian capitals at corners and between windows visually support bracketed second story wall cornice; windows on the south façade and on the east over the entry are round arched with hoods and oversized keystone; stepped beltline over the round arched doorway with fanlight above

Interesting Feature(s)

Notes & Comments

Review for Compliance with City of Plattsmouth Design Guidelines for Historic Preservation 2008:

Work to pressed-metal cornice; transoms at doors; pilasters and other decorative elements

Retain/Preserve

Conforming Work

Work to pressed metal cornice in need of repair

Restore/Reconstruct

Non-Conforming Work doors (material and style); visible air conditioning unit; infill of transom above main entry

Notes & Comments

108 N. 4th Street

Preserve pressed-metal cornice

Leave brick unpainted

Remove air conditioning unit from view

Preserve decorative elements

Restore transom windows



Install new doors of proper style and material



2008 Survey Sheet: Plattsmouth, Nebraska – Main Street Historic District

Survey of Existing Conditions: Buildings (Exterior)

Survey I.D. Number: 94

Name of Structure: Cass County Courthouse

Address: 346 Main Street



Number of Stories	3	Historic Name	Cass County Courthouse
Overall Shape	articulated rectangle; five part facade	NE Hist Bldg Survey No.	CC14-109
Primary Wall Material(s)	masonry	Historic Use	courthouse
Other Material(s)	basement - Bayfield brownstone; second and third stories – Kansas City pressed brick, embellished with stone and terra cotta trimmings	Year(s) Built	1892
Roof type	pyramidal, gable	Current Use(s)	courthouse
Windows/Doors	replacement windows		
		Style(s)	Romanesque County Capitol
		Architect/Builder	architect – William Gray
Alteration(s)			
Stylistic Feature(s)	rusticated raised basement; symmetrically arranged with a tower constructed as an independent structure; contains a clock and triple round arch window grouping; central entrance bays are marked by a protruding gable; Palladian windows and terra cotta accents; entrance arch; terra cotta is used generously throughout the structure for decorative gables, keystones, corner accents, roof edge moldings, and has had few alteration		
Interesting Feature(s)			
Notes & Comments	central tower is 135’ tall		

Review for Compliance with City of Plattsmouth Design Guidelines for Historic Preservation 2008:

Work to Retain/Preserve

Conforming Work awnings

Work to

Restore/Reconstruct

Non-Conforming Work replacement windows (material)

Notes & Comments

346 Main Street



Any alterations done to the Cass County Courthouse have been historically sensitive.

336 Main Street



Cass County Law Enforcement Center is an acceptable addition to the Cass County complex.

2008 Survey Sheet: Plattsmouth, Nebraska – Main Street Historic District

Survey of Existing Conditions: Buildings (Exterior)

Survey I.D. Number: 104

Name of Structure: Bell's Gifts and
Things/laundromat

Address: 119 N. 6th Street



Number of Stories	1	Historic Name	
Overall Shape	square; double-wide storefront	NE Hist Bldg Survey No.	CC14-128
Primary Wall Material(s)	masonry	Historic Use	
Other Material(s)		Year(s) Built	c. 1920's
Roof type	flat	Current Use(s)	toy store/laundromat
Windows/Doors		Style(s)	
		Architect/Builder	unknown

Alteration(s)

Stylistic Feature(s) recessed entry; brick corbelling; original storefront

Interesting Feature(s)

Notes & Comments

Review for Compliance with City of Plattsmouth Design Guidelines for Historic Preservation 2008:

Work to brick detailing; recessed entries

Retain/Preserve

Conforming Work signage at lintel

Work to

Restore/Reconstruct

Non-Conforming neon signage

Work

Notes & Comments

Leave brick unpainted

Preserve brick detailing

Retain appropriate signage



Avoid using neon signage

2008 Survey Sheet: Plattsmouth, Nebraska – Main Street Historic District

Survey of Existing Conditions: Buildings (Exterior)		Survey I.D. Number:	105
Name of Structure:	Alltel	Address:	115 N. 6 th Street



Number of Stories	1	Historic Name
Overall Shape	rectangular	NE Hist Bldg Survey No. n/a
Primary Wall Material(s)	masonry	Historic Use
Other Material(s)		Year(s) Built
Roof type	flat	Current Use(s)
Windows/Doors		Style(s)
		Architect/Builder unknown
Alteration(s)		
Stylistic Feature(s)		
Interesting Feature(s)		
Notes & Comments		

Review for Compliance with City of Plattsmouth Design Guidelines for Historic Preservation 2008:

Work to	
Retain/Preserve	
Conforming Work	
Work to	
Restore/Reconstruct	
Non-Conforming Work	signage (material)
Notes & Comments	

Preserve pressed-
metal cornice



Select more historically
sensitive signage

Select more historically
accurate window treat-
ments

Retain appropriate doors
and windows

2008 Survey Sheet: Plattsmouth, Nebraska – Main Street Historic District

Survey of Existing Conditions: Buildings (Exterior)		Survey I.D. Number:	109
Name of Structure:	City Hall	Address:	136 N. 5 th Street



Number of Stories	1	Historic Name	Plattsmouth Post Office
Overall Shape	rectangular	NE Hist Bldg Survey No.	CC14-80
Primary Wall Material(s)	masonry	Historic Use	post office/jail in basement
Other Material(s)		Year(s) Built	1910
Roof type	flat	Current Use(s)	city hall
Windows/Doors		Style(s)	Neo-Classical Revival
		Architect/Builder	architect – James Knox Taylor

Alteration(s)	
Stylistic Feature(s)	raised entry; parapet wall; building is divided in to five bays by paired brick pilasters which rest upon stone water table and which in turn visually support stone wall cornice; each bay displays round arched window opening; stone, modillioned wall cornice, central doors and large slightly recessed rectangular divided pane windows with fan lights detailed above with round arches with keystone ornament, which are in turn visually supported by flush brick pilasters; stone caped parapet wall
Interesting Feature(s)	cornerstone reads: 'Franklin Macveach, Secretary of the Treasury, James Knox Taylor, Supervising Architect, MCMX
Notes & Comments	

Review for Compliance with City of Plattsmouth Design Guidelines for Historic Preservation 2008:

Work to Retain/Preserve	
Conforming Work	replacement windows
Work to Restore/Reconstruct	
Non-Conforming Work	
Notes & Comments	

136 N. 5th Street



Any alterations done to the Plattsmouth City Hall have been historically sensitive.

2008 Survey Sheet: Plattsmouth, Nebraska – Main Street Historic District

Survey of Existing Conditions: Buildings (Exterior)

Survey I.D. Number: 110, 111 & 112

Name of Structure: vacant (110)/Mirror Image Photography (111)/Marcia's Tours (112)

Address: 120 & 116 N. 5th Street



Number of Stories	2	Historic Name	Sherwood Block
Overall Shape	rectangular; three bay	NE Hist Bldg Survey No.	CC14-125
Primary Wall Material(s)	masonry	Historic Use	cobbler
Other Material(s)	cast iron	Year(s) Built	c. 1883
Roof type	flat	Current Use(s)	shop
Windows/Doors	windows partially bricked in on second floor	Style(s)	
		Architect/Builder	built for Robert Sherwood
Alteration(s)	some windows bricked in; modernized storefront		
Stylistic Feature(s)	brick wall cornice above storefront; corbelled brick cornice on second floor; some original cast iron facade		
Interesting Feature(s)			
Notes & Comments	some capitals are missing; stone sills in need of repair		

Review for Compliance with City of Plattsmouth Design Guidelines for Historic Preservation 2008:

Work to	brick cornice, detailing; cast iron elements
Retain/Preserve	
Conforming Work	
Work to	
Restore/Reconstruct	
Non-Conforming Work	infill of transom windows; inappropriate infill windows at upper floors (size and material); inappropriate windows and doors at lower façade (style and material); painting of brick lintel area; color palette
Notes & Comments	

116 & 120 N. 5th Street

Install windows of correct size, style and material

Preserve brick cornice and other detailing

Leave brick unpainted

Preserve cornice at lintel area

Preserve cast iron elements

Restore transom windows

Restore original entry

Reconstruct lower window panel

Install new door of proper style and material

Select more appropriate color palette



2008 Survey Sheet: Plattsmouth, Nebraska – Main Street Historic District

Survey of Existing Conditions: Buildings (Exterior)		Survey I.D. Number:	114
Name of Structure:	Public (Carnegie) Library	Address:	400 Avenue A



Number of Stories	1	Historic Name	City Library
Overall Shape	rectangular	NE Hist Bldg Survey No.	CC14-77
Primary Wall Material(s)	masonry	Historic Use	library
Other Material(s)		Year(s) Built	1916
Roof type	flat	Current Use(s)	library
Windows/Doors		Style(s)	Neo-Classical Revival
		Architect/Builder	unknown

Alteration(s)	brick addition
Stylistic Feature(s)	raised basement; parapet wall; raised entry pavilion featuring round arched door opening with transom flanked by Tuscan columns visually supporting stone wall cornice; both wall cornices run entire width of front and side facades; wall surfaces are enhanced by brick articulation; fenestration consists of rectangular shaped openings with main façade showing three window units with transoms above
Interesting Feature(s)	'PUBLIC LIBRARY' inscribed in the frieze
Notes & Comments	

Review for Compliance with City of Plattsmouth Design Guidelines for Historic Preservation 2008:

Work to Retain/Preserve	stone cornice, columns, etc.
Conforming Work	door
Work to Restore/Reconstruct	
Non-Conforming Work	color of storm windows
Notes & Comments	

400 Ave. A



Any alterations done to the Plattsmouth
Public Library have been historically sensitive.

2008 Survey Sheet: Plattsmouth, Nebraska – Main Street Historic District

Survey of Existing Conditions: Buildings (Exterior)		Survey I.D. Number:	115
Name of Structure:	Old Jail	Address:	145 N. 4 th Street



Number of Stories	2	Historic Name	Cass County Jail
Overall Shape	tee-shaped; three bays	NE Hist Bldg Survey No.	CC14-126
Primary Wall Material(s)	masonry	Historic Use	county jail
Other Material(s)		Year(s) Built	1914
Roof type	flat	Current Use(s)	county offices
Windows/Doors		Style(s)	
		Architect/Builder	unknown
Alteration(s)	one story addition built to the north		
Stylistic Feature(s)	brick arched corbel table is supported by stone corbelling; stone beltline above and below windows on first floor; stone beltline at sill level of second story windows; stone coped parapet		
Interesting Feature(s)			
Notes & Comments			
Review for Compliance with City of Plattsmouth Design Guidelines for Historic Preservation 2008:			
Work to Retain/Preserve	brick and stone corbelling, detailing		
Conforming Work			
Work to Restore/Reconstruct			
Non-Conforming Work	alteration of main entry; windows (material)		
Notes & Comments			

145 N. 4th Street

Preserve cornice and
other brick and stone
details

Leave brick unpainted



Install windows that
are more historically
accurate

Restore original entry with door of
proper style and material

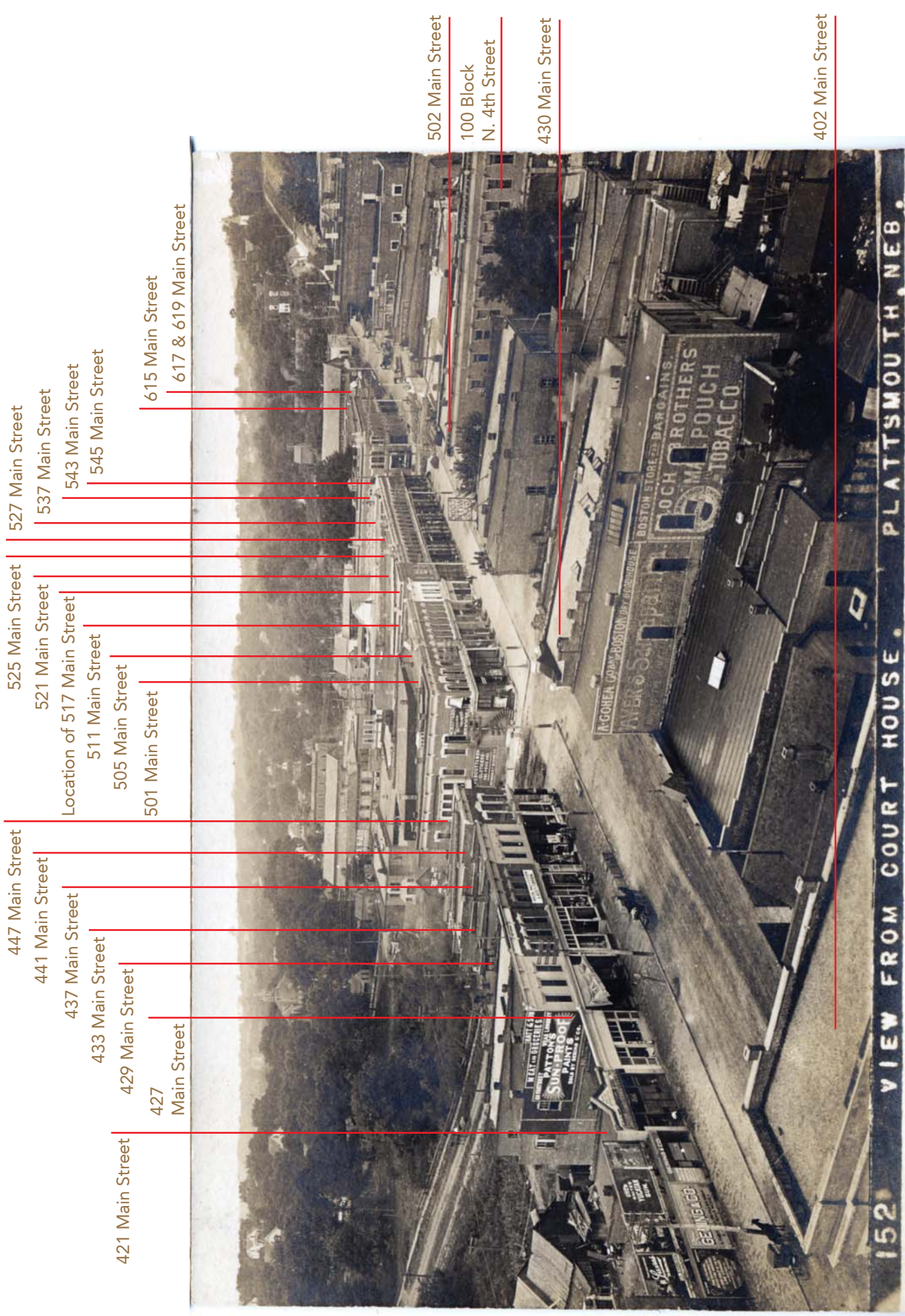


Fig. 2.10 Main Street Looking Southwest c. 1908

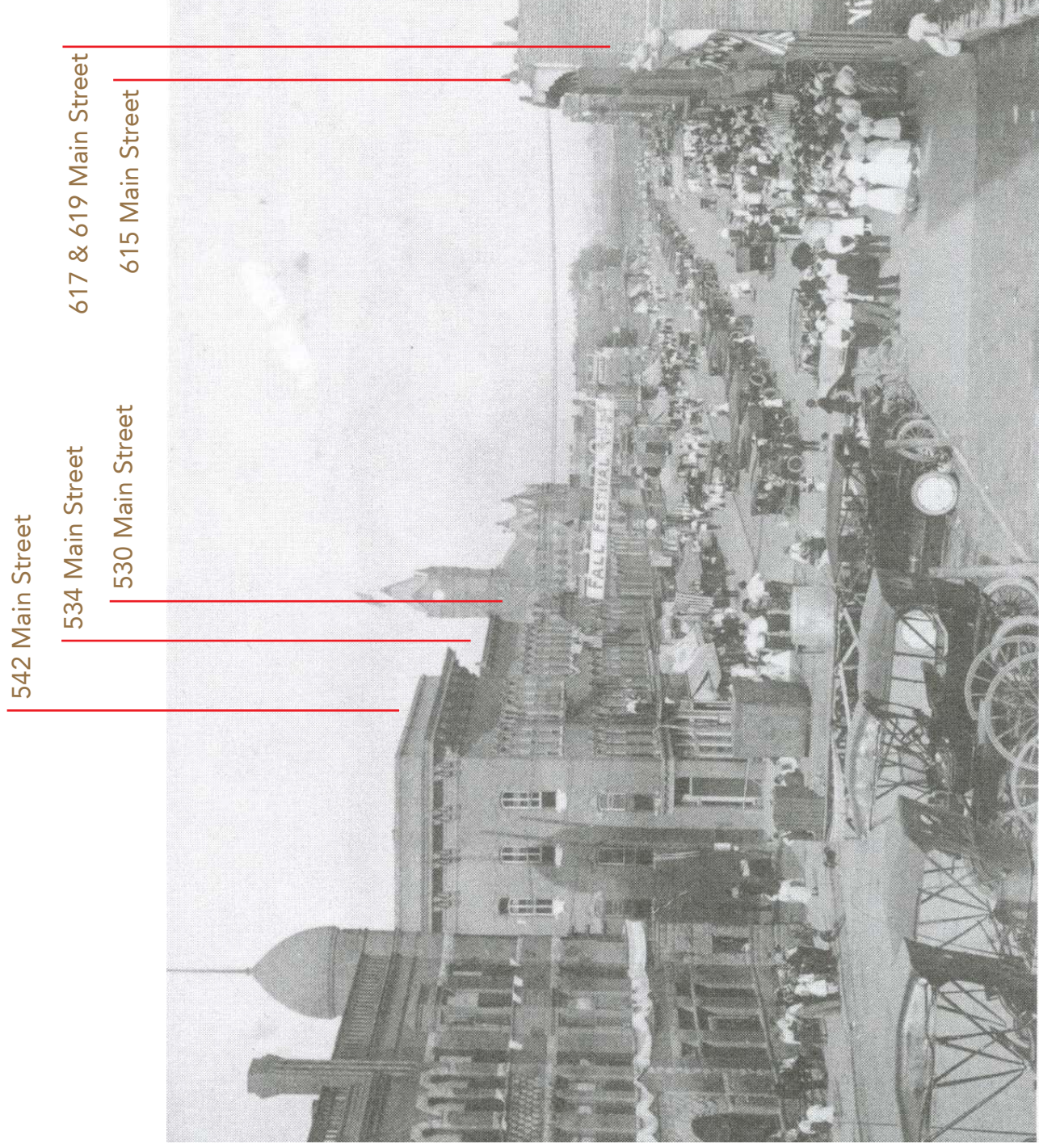


Fig. 2.0 Main Street Looking Northeast c. 1916

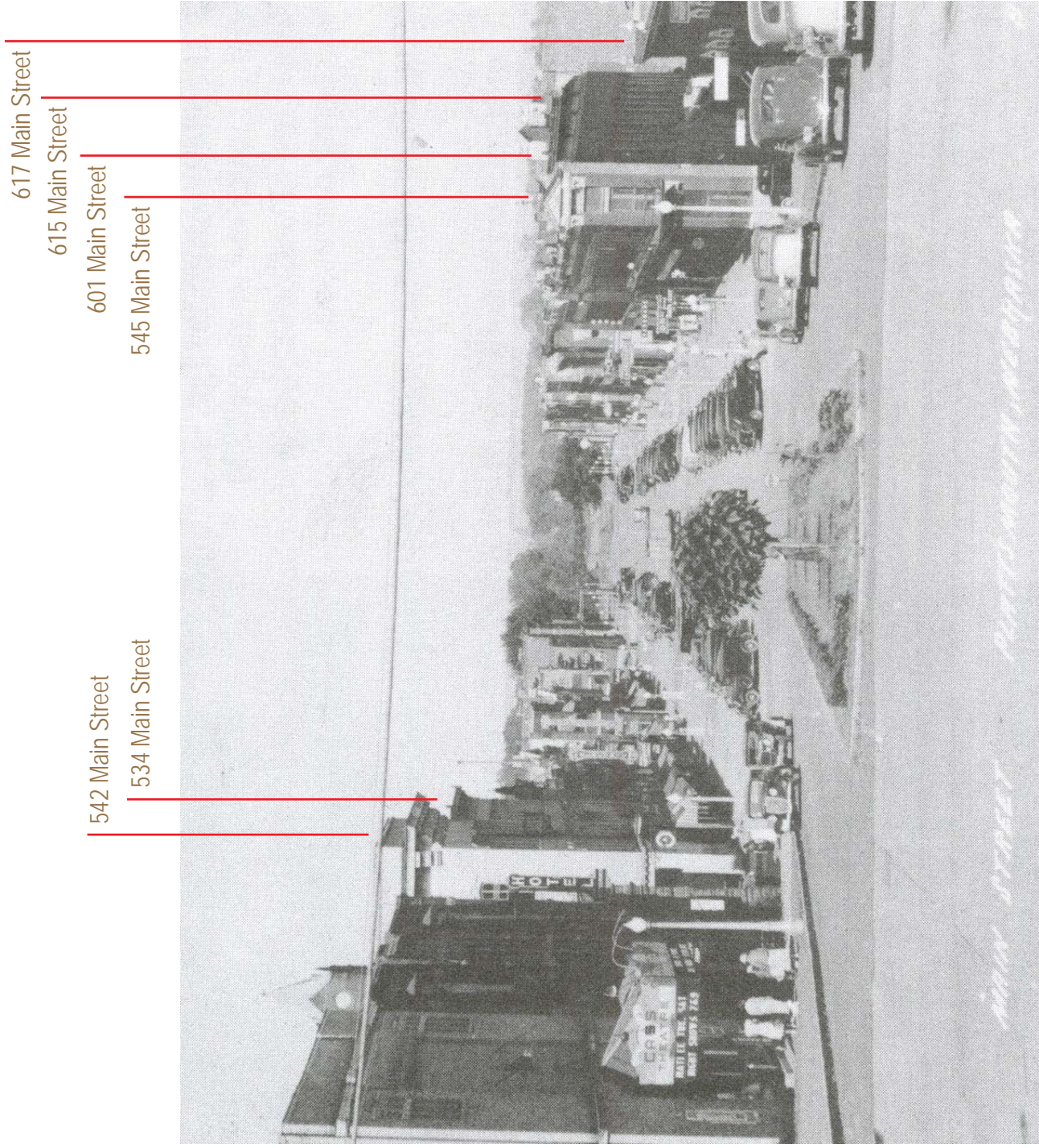


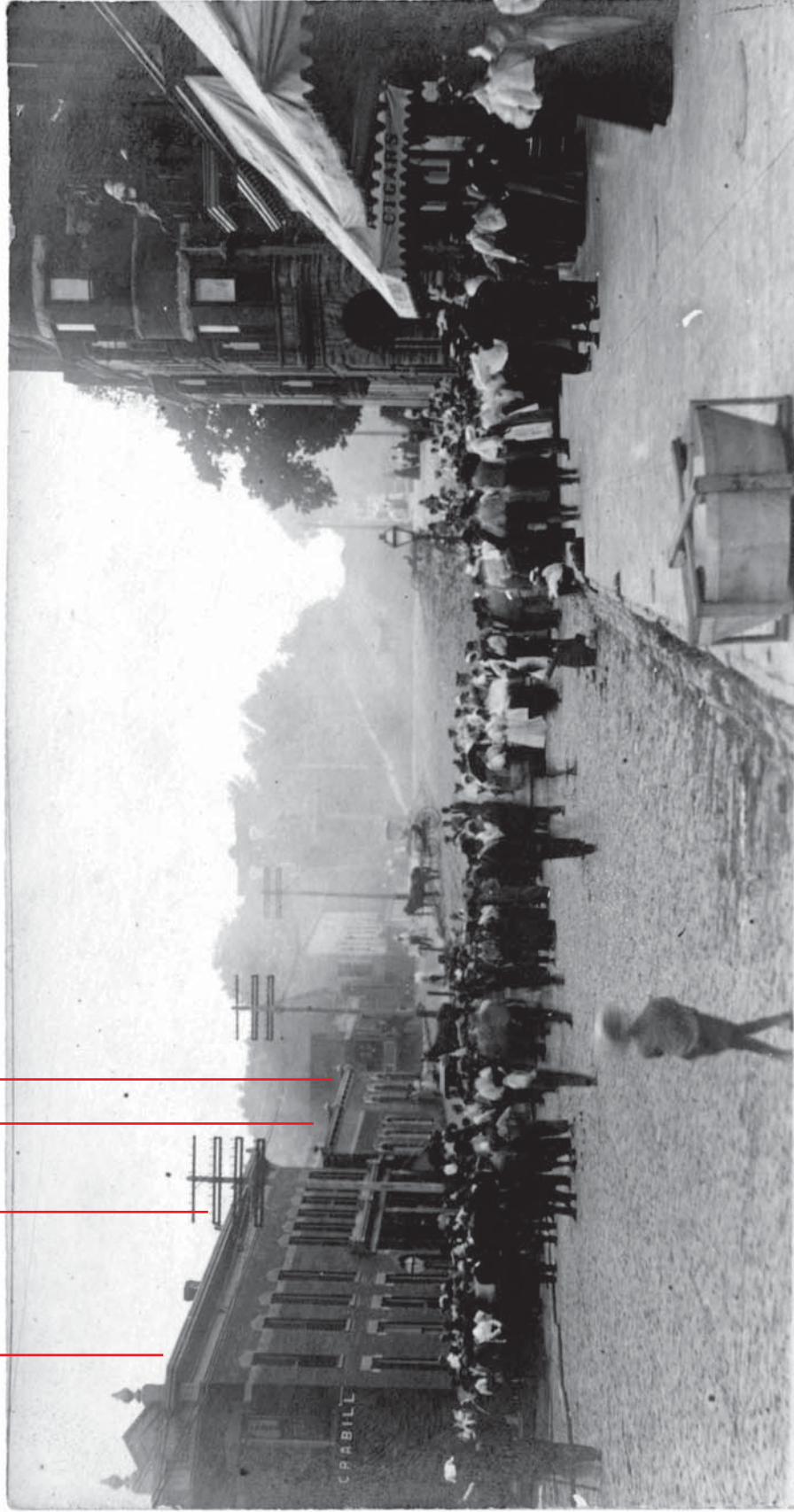
Fig. 3.0 Main Street Looking East

601 Main Street

615 Main Street

617 Main Street

619 Main Street



No. 189 E.A. Wurl's Grocery Fire July. 7 th' 1907. Plattsmouth, Nebr.

H. E. Weldman, Pub.

Fig. 4.0 600 Block of Main Street 1907

122 S. Sixth Street

544 Main Street

116-106 S. Sixth Street

545 Main Street



NO 194

SIXTH STREET, AFTER THE FLOOD

PLATTSMOUTH, NEB

H. E. Weidman, Pub.

Fig. 50 100 Block South Sixth Street c. 1906

501 Main Street

505 Main Street

511 Main Street

Location of 517 Main Street

521 Main Street



H. E. Weldman, RUB

Fig. 6.0 500 of Main Street c. 1906

437 Main Street*

*(see Sanborn maps for 1888)

430 Main Street

436 Main Street

Location of 440 Main Street

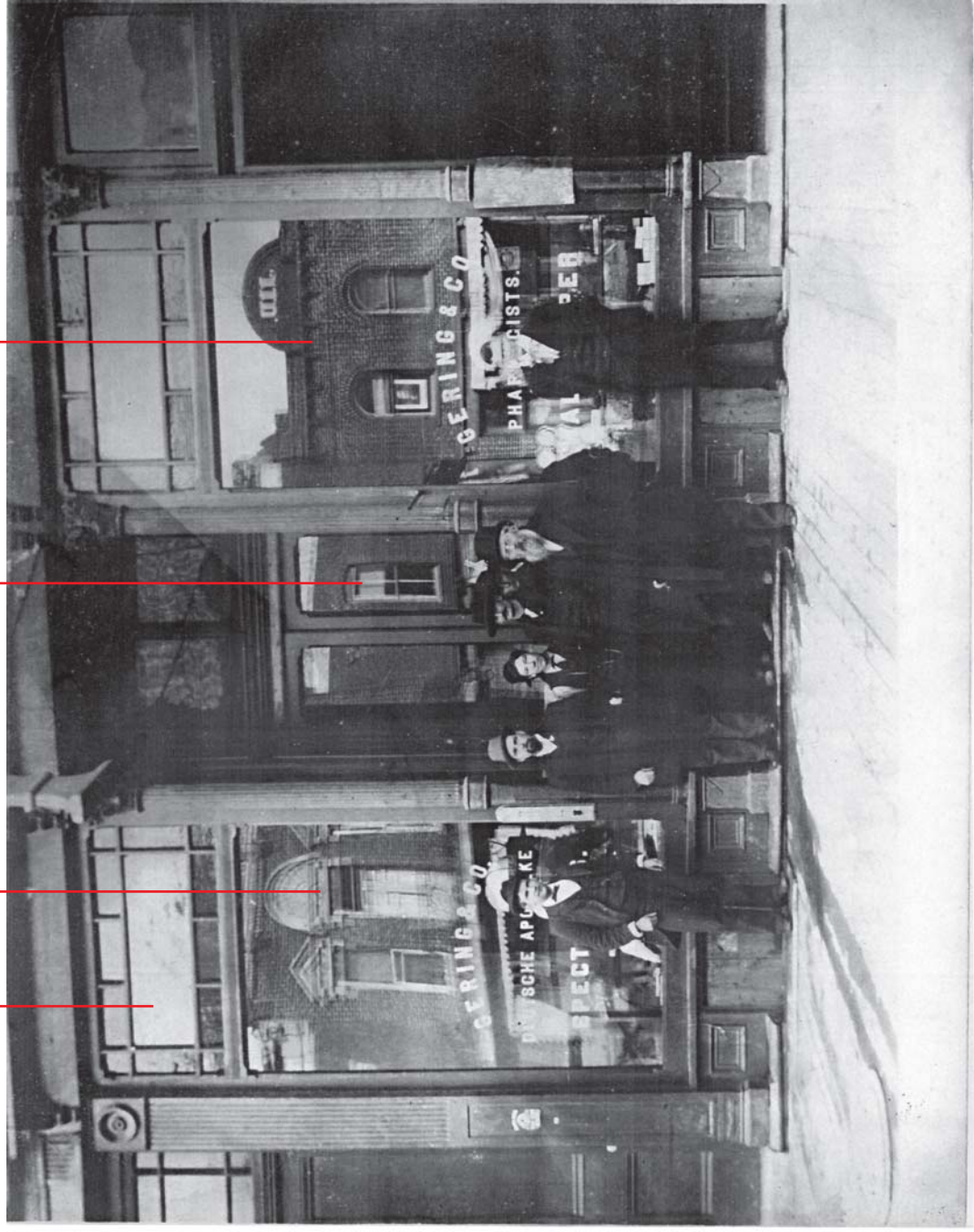


Fig. 7:0400 Block of Main Street c. 1890's

329 Main Street
 325 Main Street
 321 Main Street
 317 Main Street
 313 Main Street
 305 Main Street
 337 Main Street
 339 & 341 Main Street
 401 - 409 Main Street

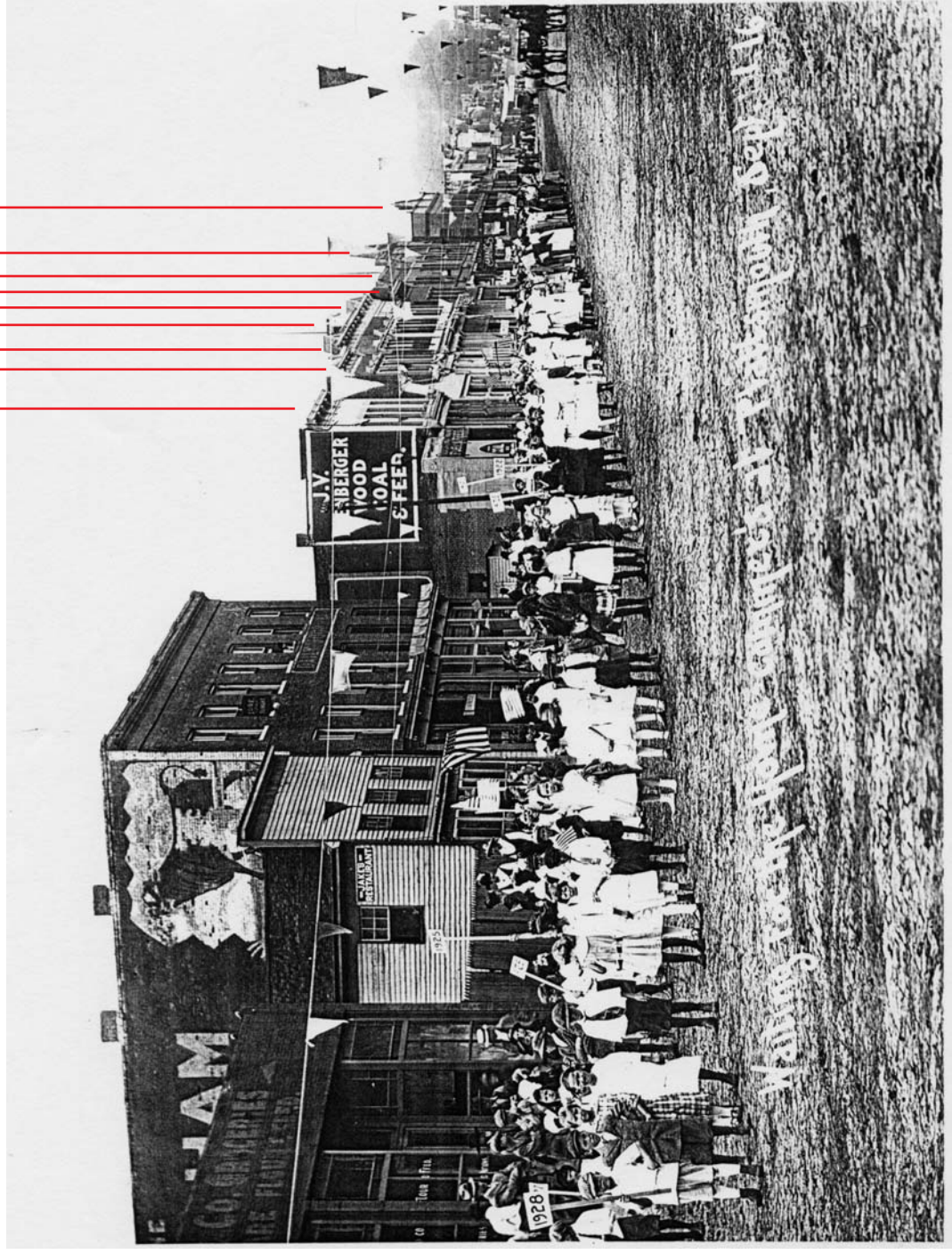


Fig. 8.0 300 Block of Main Street 1916

534 Main Street

530 Main Street

528 Main Street

522 Main Street

518 Main Street

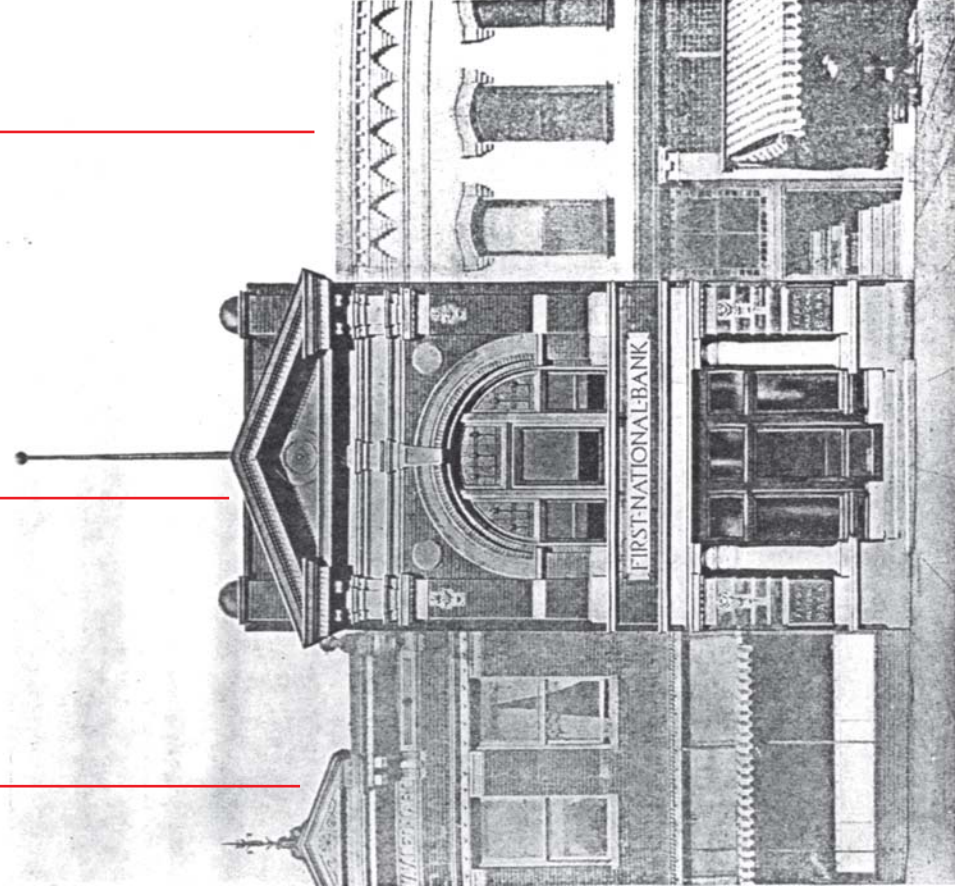
516 Main Street



SNOW-DRIFTS, FEB 26, 1912 PLATTSMOUTH, NEB

Fig. 9.0 500 Block of Main Street 1912

518 Main Street | 516 Main Street | 510 Main Street



The Present Bank Building

Fig. 10.0 500 Block of Main Street c. 1921